



Welcome to the fortnightly Geological Society newsletter.

In this issue:

- [Resources on the 25 April Nepal Earthquake](#)
- [President's Day 2015 and AGM](#)
- [Map Collection Notice](#)
- [Recent Special Issues in the Virtual Library](#)
- [NEW! Special Publication SP396 and an A2 Print of William Smith's Map](#)
- [Society Events](#)
- [Last Chance to Apply for the STEPPE Student/Early Careers Travel Award](#)
- [Joint Photo Competition](#)
- [Specialist and Regional Group Events](#)
- [Got a Question about Fracking? Get it Answered by an Expert](#)

Resources on the 25 April Nepal Earthquake

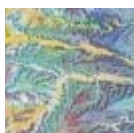


On 25 April 2015, a magnitude 7.8 earthquake occurred in Nepal. The largest the country has experienced in over 80 years, the earthquake has devastated many areas of this Himalayan country, leaving towns and villages cut off by severe damage including avalanches and landslides.

[A new webpage](#) lists resources which Fellows and members of the public may find useful to understand the geological context in which the earthquake occurred, the history of tectonics in this region and resources on earthquakes more generally. A selection of papers on

Himalaya tectonics, published by the Geological Society over the last three decades, is also available.

[Visit the website for more information](#)
[Back to top](#)



Membership

President's Day and AGM 2015

Earlier in the year, the Society announced the winners of its medals and funds for 2015. [The full list of winners is available on our website.](#)

The Awards will be presented on President's Day, to be held this year on 3 June 2015. The day will begin with the Annual General Meeting followed by a buffet lunch with the award winners. After the Awards ceremony, the four senior medallists will give a short talk on their chosen subject.

All Fellows are welcome to attend the afternoon events of President's Day for which there is no charge. Lunch with the Award winners is by ticket only at £27.50.

[Visit the website for more information and to register](#)
[Back to top](#)



Library and Information Services

Map Collection Notice



The Library's collection of African maps will be offsite for two months. From 24 April till 1 July (expected return date) it will not be possible to consult or borrow any African maps from the Map Room. Apologies for any inconvenience caused.

The remainder of the Library's geological map collection - with worldwide coverage - is available for consultation in the Library, or can be borrowed by Fellows and Corporate Affiliate members by post.

Visit www.geolsoc.org.uk/maps for more information.
[Back to top](#)

Recent Special Issues in the Virtual Library

The Recent Special Issues section of the Virtual Library contains details of thematic special issues from e-journals which are available to Fellows. These include both the [Library's 'Athens' login journals](#) and ones which are freely available online.

New special issues on the following topics have been added to May's section.

- [Coal and organic petrology](#)
- [Development of the Asian Tethyan realm](#)
- [Paleosols, pedosediments and landscape morphology as environmental archives](#)
- [Structure and stratigraphy of Canning Basin, W. Australia](#)



- [Volcanic-associated massive sulphide mineralization at Weld Range, Australia](#)

Athens authentication can also be used to access more than 90 other journals from leading publishers.

[Visit the website for more information](#)

[Back to top](#)



Publications

NEW! Special Publication and A2 Map Print



NEW! SP396: The Use of Palaeomagnetism and Rock Magnetism to Understand Volcanic Processes

Edited by M.H. Ort, M. Porreca and J.W. Geissman

Published 14 April 2015



This volume provides a synopsis of current research on volcanic processes, as gained through the use of palaeomagnetic and rock magnetic techniques.

[Visit the bookshop to find out more](#)

NEW! William Smith 1815 Geological Map of England and Wales with part of Scotland (reproduction)

An A2 size map print by the Geological Society of London. Reproduced from a recently rediscovered original of William Smith's famous 1815 geological map.

Many of our publications are available to purchase at the Geological Society Burlington House Bookshop, situated inside the library at Burlington House, Piccadilly, London W1J 0BG



Please call ahead to check stock levels before making a special journey - +44 (0)207 432 0999

[To buy this map visit the online bookshop](#)

Email: [Bookshop](#)

[Back to top](#)



Events

Sustainable Exploitation of the Subsurface



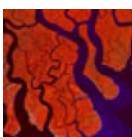
Date: 20 - 21 May 2015

Venue: The Geological Society, Burlington House, London

FINAL OPPORTUNITY TO BOOK

A two day meeting coordinated by the Geological Society and the UK IAEG National group that will aim to bring together current thinking of the role the ground plays in providing a resilient underground resource. Confirmed speaker Sir Mark Walport (UK Government Chief Scientist)

[To view the programme and book your place, visit the website](#)
[Back to top](#)



Education & Careers

Apply for the STEPPE Student/Early Career Travel Award



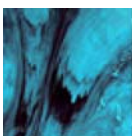
Opportunity for graduate students and early careers scientists to travel to Graz, Austria to attend [STRATI 2015: 2nd International Congress on Stratigraphy](#), and an NSF-funded workshop, "[Vouchering the Stratigraphic Record.](#)"

Application Deadline: 8 May 2015



The Sedimentary Geology, Time, Environment, Paleontology, Paleoclimatology, Energy (STEPPE) office, in collaboration with the American Geosciences Institute (AGI), Geological Society of America (GSA), the Society for Sedimentary Geology (SEPM), and the Paleontological Institute are pleased to offer this funding opportunity.

[Find out how to apply](#)
[Back to top](#)



Groups & Networks

Joint Photography Competition



The West Midlands, North West and Southern Wales Regional Groups and the Black Country Geological Society present a joint group Photographic Competition celebrating the bicentenary of the [William Smith Map \(1815 - 2015\)](#).



The theme is Geologica Britannica - Exhibiting the Geology of the British Isles & Applied Geology in the British Isles

To see the prizes and find out how to enter, [visit the photo competition page](#).

[Back to top](#)

Specialist and Regional Group Events

Visit the individual event pages for more information.



East Midlands Regional Group: [Roving on the Red Planet](#)

Date: 11 May 2015

Venue: British Geological Survey, Keyworth

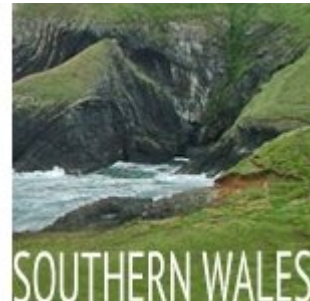
This talk will give an update on Curiosity Rover's findings and plans as it revolutionises our view of the evolution of the Red Planet.

Southern Wales Regional Group: [Groundwater in Africa - Is there Enough to go Around?](#)

Date: 12 May

Venue: Cardiff University, Wallace Lecture Theater

Professor Alan McDonald will talk about his work in Africa and production of the first groundwater resource map for the continent.



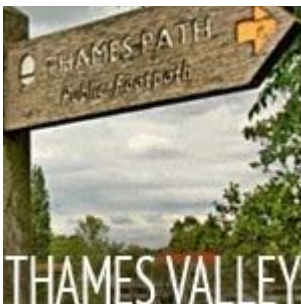
Southern Wales: [Urban Geology in Wales](#)

Date: 19 May

Venue: Cardiff University, Cardiff

A series of short 15 minute talks summarising applied engineering geology projects in Wales.

[Back to top](#)



Thames Valley Regional Group: [Road Design and Construction Across the Blue Nile Gorge, Ethiopia](#)

Date: 12 May

Venue: The Bird in Hand, Knowl Hill

Dr Gareth Hearn will describe the work and processes used for the finalisation of the road crossing as well as how the techniques developed serve as a blueprint for other road construction and improvement schemes.

South Eastern Regional Group: [Hooley Cutting Stabalisation Project](#)

Date: 12 May

Venue: Mott MacDonald House, Croydon

The talk provides a short history of the issues necessitating the



stabilisation work and will cover the design development aspects and construction works which included some innovative techniques.



Hydrogeological Group, Groundwater Modeller's Forum: [Modelling Groundwater in the Urban Environment](#)

Date: 13 May

Venue: Priory Rooms, Birmingham

The UK Groundwater Modellers' Forum is holding its 13th workshop on new issues and applications in groundwater modelling in the UK.

[Back to top](#)

Solent Regional Group: [Field Trip to Devon](#)

Date: 16 - 17 May

Venue: Buckfastleigh, Devon

A two day event involving gold panning near Dartbridge, Buckfastleigh on Sat 16 and a visit to Ladram Bay in East Devon on Sunday 17.



Petroleum Group: [Sedimentology of Paralic Reservoirs: Recent Advances and their Applications](#)

Date: 18 - 19 May

Venue: The Geological Society, Burlington House, London

This conference will address new research themes together with developments in established approaches to discuss the current state of knowledge in the exploration and production of paralic reservoirs.

Western Regional Group: [Near Surface Geophysics as used in Geotechnical Site Investigations](#)

Date: 19 May

Venue: Department of Earth Sciences, Bristol University

Through the use of several case studies this lecture will look at the significant advantages as well as the trials and pitfalls of using geophysics. Methods such as resistivity tomography, microgravity, seismic, electromagnetic and magnetics techniques will be introduced.

[Back to top](#)

South West Regional Group: [Revision of BS 5930 - Contaminated Aspects of Engineering Investigations](#)

Date: 20 May

Venue: Ley Arms, Kenn, near Exeter

The presentation will concentrate on how contamination is dealt with in the revised BS 5930. It will also describe the potential impact of the new ISO 18400 series on sampling for the determination of soil quality while investigating potentially contaminated sites.

Northern Ireland Regional Group: [Implementing Geological Disposal of Higher Activity Radioactive Waste](#)

Date: 21 May

Venue: Wellington Park Hotel, Belfast

A talk by senior geologists of Radioactive Waste Management Ltd (RWM)

[Back to top](#)

CL:AIRE Networking Series Events

Geological Society and CL:AIRE Networking series events looking at the LNAPL Illustrated Handbook - a best-practice guidance for the assessment and remediation of light non-aqueous phase liquids (LNAPLs) in the subsurface.

West Midlands Regional Group: [LNAPL Illustrated Handbook](#)

Date: 12 May

Venue: Haworth Building, The University of Birmingham

CL:AIRE

North West Regional Group: [LNAPL and Fate in the Subsurface - An Illustrated Handbook](#)

Date: 21 May

Venue: Williamson Lecture Theatre, Manchester University



Other News

Got Questions about Fracking? Get Them Answered by an Expert

Sense about Science, a charitable trust that equips people to make sense of scientific and medical claims through public discussion, has put together a panel of scientists to try and decipher fact from fiction around the controversial subject of Fracking. Dr Zoe Shipton, a Fellow of the Geological Society and chair of the [Tectonic Studies Group](#), is part of the panel.

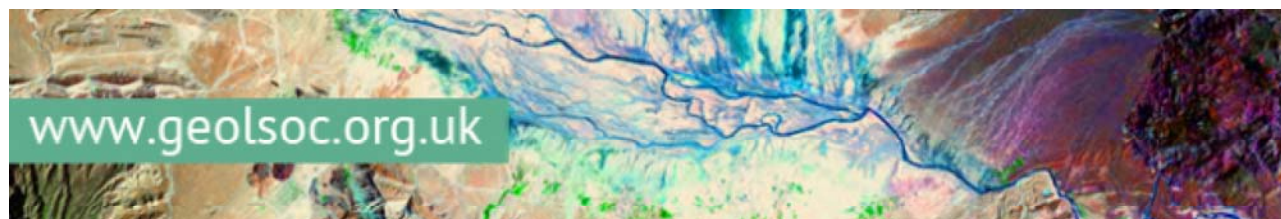
The online Q&A will be on Tuesday 12 May at 1pm.

Email energy@senseaboutscience.org, tweet using [#energy](#) or [fill in the question form](#) to submit a question ahead of time and ensure you get an answer.



Visit www.senseaboutscience.org for more information

[Back to top](#)



The Geological Society of London • Burlington House • Piccadilly, London W1J 0BG

<http://www.geolsoc.org.uk>

[Subscribe](#) | [Unsubscribe](#) | [Send to a Friend](#) | [Preferences](#) | [Report Spam](#)