



Welcome to the fortnightly Geological Society newsletter.

In this issue:

- [Sustainable Resource Development in the Himalaya](#)
- [New President & Council Members](#)
- [New Publications from the Geological Society](#)
- [New Online Papers](#)
- [Upcoming Events](#)
 - [Abstracts Deadline Extended: Deep Earth Processes](#)
 - [Call for Abstracts: William Smith Meeting 2015: 200 Years of Smith's Map](#)
- [The Geological Society Careers Days 2014](#)
- [Specialist and Regional Group Events](#)
- [The Specialist in Land Condition \(SiLC\) Register](#)

Sustainable Resource Development in the Himalaya



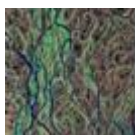
The rich and varied resources of the Himalaya hold the promise of enormous opportunities for local communities and the nations to which they belong. Yet unless these resources are developed sustainably, they also have the potential to do great damage to people and environments.

With Narendra Modi's new Indian government continuing to explore the idea of establishing a separate ministry to manage Himalayan affairs, focusing on the resources and challenges faced by the region is becoming increasingly important. The conference, on 24-26 June, will explore relevant geoscience research and identify lessons for sustainable resource development in the Himalaya and more widely.

The meeting is organised by the Geological Society and the Institute of Energy Research & Training, University of Jammu, in collaboration with other local partner organisations, and will take place in the Ladakh region, in the Indian state of Jammu and Kashmir - an area which both the state and national governments wish to establish as an example of best practice in sustainable development.

Topics covered include earthquake hazard mitigation, resilience to climate change, water & sanitation, and the challenges and opportunities of tourism. The conference will be preceded by a 2-day workshop for around 200 local school children focusing on climate change, natural hazards and sustainable resource development in the Himalaya.

[Visit the website for more information](#)
[Back to top](#)



Membership

New President and Council Members

President's Day on 4 June was a great success. Dr David Manning was elected as the new President, and several new Council Members were elected at the AGM. [More details and Council biographies](#) are available on the website. [Award Winner's citations and Replies](#) are also available online.

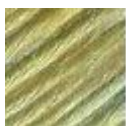
As in previous years, the recipients of the major medals were invited to give a short talk on their subject, and the Awards Ceremony was followed by presentations by the Lyell, Murchison, William Smith and Wollaston medallists.



The Medallists' talks will be available to watch soon on the [Past Meeting Resources](#) webpage.

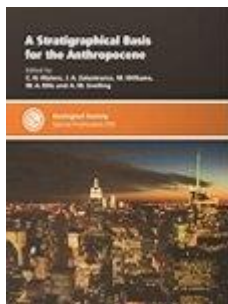
[Visit the website for more information](#)

[Back to top](#)



Publications

SP395 - *A Stratigraphical Basis for the Anthropocene*



Edited by C.N. Waters, J.A. Zalasiewicz, M. Williams, M.A. Ellis and A.M. Snelling

This volume describes geological evidence of human-induced environmental change to help constrain definition of the Anthropocene as a potential geological time unit. Major and evolving signatures include lithostratigraphical (novel deposits and minerals, modification of sedimentary processes), biostratigraphical (macro- and micro-palaeontological successions and human-induced trace fossils) and chemostratigraphical (radiogenic, organic and inorganic).

List price £90
Fellows' price £45

[Visit the website for more information](#)

[Back to top](#)

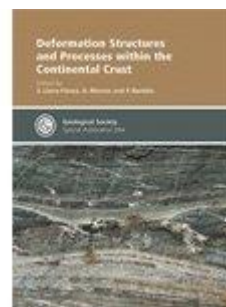
SP394 - *Deformation Structures and Processes within the Continental Crust*

Edited by S. Llana-Fúnez, A. Marcos and F. Bastida

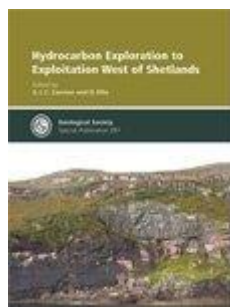
This volume is concerned with the rheological behaviour of the continental crust and the development of deformation structures as a function of the depth and physical magnitudes such as temperature and deformation rate. The geometrical description of the structures is complemented by analytical techniques and their development contrasted by experimental and numerical studies.

List price £90
Fellows' price £45

[Visit the website for more information](#)
[Back to top](#)



SP397 - *Hydrocarbon Exploration to Exploitation West of Shetlands*



Edited by S.J.C. Cannon and D. Ellis

This volume addresses the technical, environment and commercial challenges facing explorers and developers alike in a region that is becoming a major focus of the petroleum industry. Several oil and gas fields that were discovered over ten years ago remain undeveloped because of poor seismic imaging, complex geology and harsh operating conditions that limit data acquisition.

List price £90
Fellows' price £45

[Visit the website for more information](#)
[Back to top](#)

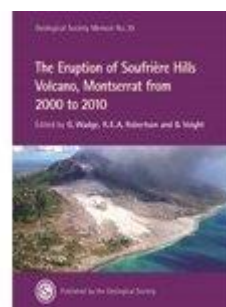
Memoir 39 - *The Eruption of Soufrière Hills Volcano, Montserrat from 2000 to 2010*

Edited by G. Wadge, R.E.A. Robertson & B. Voight

A definitive record of one of the most important eruptions ever studied. The 27 papers cover explosions, lava dome collapse, deformation, petrological models of the magma at depth and its rise. The way in which the crisis was managed and the risks assessed is analysed.

List price £125
Fellows' price £62.50

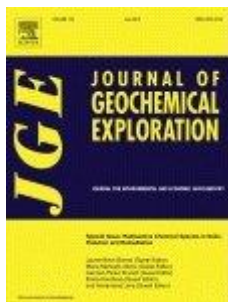
[Visit the website for more information](#)
[Back to top](#)





Library and Information Services

Online Papers - Radioactive Chemical Species in Soils: Pollution and Remediation



Journal of Geochemical Exploration Vol.142 contains papers on natural radionuclides in soils, cements, building materials, mining and processing sites; technogenic radionuclides in mining and industrial activities, and in polluted soils resulting from the Chernobyl and Fukushima accidents; the remediation of radionuclide polluted soils; and radiogenic isotopes research in pedogenesis and pollution.

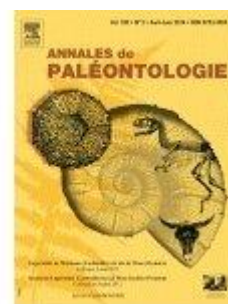
Athens passwords needed for offsite access.

[Visit the website for more information](#)
[Back to top](#)

Online Papers - Fossils from Montceau Lagerstätte (Carboniferous) & the Muse Region (Permian)

Annales de Paléontologie Vol.100 No.2 contains 7 papers in English and French from a symposium on the Carboniferous site of Montceau which has exceptional preservation of plant and animal fossils and on the Permian site of Muse.

Topics covered include the 100,000+ fossiliferous nodules found in the area, amniote diversity in France over the Cambrian/Permian boundary, accelerated aging of shales containing fossils, and the role of mineral exploitation on the discovery of fossils in the Autun region.



Athens passwords needed for offsite access.

[Visit the website for more information](#)
[Back to top](#)

Online Papers - Geodynamic Evolution of the Alboran Domain



Journal of Geodynamics Vol.77 focuses on the Betic-Rif Cordillera and nearby areas. The papers reflect different approaches to the Rif, Betics, Alboran Sea and more general subjects. The contents of this special issue on the Gibraltar Arc and nearby regions are based on an international workshop which had the goal of providing an overview of advances in research concerning the Rif and Betics chains, the Alboran basin, and their influence on the Iberian and African forelands.

Athens passwords needed for offsite access.

[Visit the website for more information](#)
[Back to top](#)



Events

London Lecture: Geology in Space: Meteorites and Cosmic Dust

Date: 18 June 2014; Lecture repeated at 3pm & 6pm
Venue: The Geological Society, Burlington House, London

Geology is no longer limited to the Earth. Rocks are found throughout the universe on other planets, asteroids and comets and as debris ranging in size down to the tiniest pieces of stardust. In this lecture Matthew Genge, a planetary scientist and geologist from Imperial College London, will discuss the geology of space, recorded in meteorites and cosmic dust. He will show that the principles of geology still hold true far beyond the bounds of our home world.



There are still places available for the 3pm lecture, and both lectures will be broadcast live online.

[Visit the website for more information](#)

[Back to top](#)

Communicating Contested Geoscience: New Strategies for Public Engagement



Date: 20 June 2014

Venue: The Geological Society, Burlington House, London

From shale gas exploration to the deep storage of radioactive waste, geological issues are increasingly relevant to the everyday lives of people and communities across the UK. Alongside the scientific and technical challenges, developing effective engagement strategies requires geoscientists to better appreciate the knowledge and concerns of the public, especially as the geological subsurface is an unknown realm to many people.

This one-day conference will bring together geoscientists from universities, industry and government alongside specialists in communication and public engagement, to explore the challenges of communicating contested geological issues to the wider public.

[Visit the website for more information](#)

[Back to top](#)

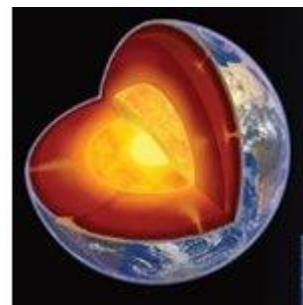
Abstracts Deadline Extended: Deep Earth Processes: Windows on the Working of a Planet

Date: 15-16 September 2014

Abstracts Deadline: 20 June 2014

Venue: The Geological Society, Burlington House, London

Our understanding of the Earth's deep interior has changed fundamentally in the last decade. The widely held view that the mantle is layered with respect to different geochemical reservoirs, and that the lower mantle has remained unchanged since the formation of the Earth 4.5 Ga, has been challenged by diverse evidence from geophysical images, mineral physics, the geochemistry of erupted melts, diamonds and their inclusions.



The meeting will draw together the latest ideas and results in a discussion of the key features of the inaccessible depths of our planet.

[Visit the website for more information](#)

[Back to top](#)

William Smith Meeting 2014: The Future of Sequence Stratigraphy: Evolution or Revolution?



Date: 22-23 September 2014

Venue: The Geological Society, Burlington House, London

This meeting is intended to bring together a diverse range of sedimentary geologists to foster a critical examination of the current state of the sequence stratigraphic model, and to highlight robust new methods, concepts and protocols that could evolve or maybe even potentially revolutionise stratigraphic understanding and prediction.

The meeting will be organised into a series of themed sessions, with an emphasis on provocative but practical presentations. A chaired discussion at the end will aim to achieve a consensus view on how the subject should move forward.

[Visit the website for more information](#)

[Back to top](#)

Call for Abstracts: William Smith Meeting 2015: 200 Years of Smith's Map

Date: 23-25 April 2015

Abstract deadline: 31 August 2014

Venue: The Geological Society, Burlington House, London

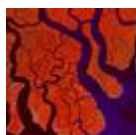
This meeting will celebrate publication of the first geological map of a nation 200 years ago. It aims to address Smith's achievements and his impact on the state of geology in his time, and will look at several aspects, including his relationship with the Geological Society of London, Smith's map, contemporary concepts of geological survey and map design and past and present research into surviving Smith maps, sections and documents.



This is the first of two Geological Society William Smith Meetings in 2015.

[Visit the website for more information](#)

[Back to top](#)



Education & Careers

The Geological Society Careers Days 2014



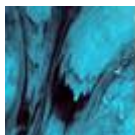
Two Careers Days have just been announced in November this year:

The Geological Society's Careers Day [on 5 November 2014 in Keyworth](#) is the essential meeting place for geoscience students and the geoscience industry. The day will include presentations on careers and an exhibition fair. University undergraduates and postgraduates will have the chance to find out about the latest career options, and talk to industry leaders about how they may gain entry into that sector. There will also be some University representatives available to discuss MSc and PhD programmes.

The Careers in Earth Science event [on 26 November in Edinburgh](#) is being run by the Earth Science Scotland community, co-badged by the Geological Society and the Petroleum Exploration Society of Great Britain. The day will include presentations from early career earth scientists from the oil and gas, mining, geotechnical, environmental and research sectors. There will also be a panel Q&A on careers. The exhibition will include employers and professional bodies, and a higher education fair, promoting MSc and PhD programmes.

[Visit the website for more information](#)

[Back to top](#)



Groups & Networks

Yorkshire Regional Group: Geological Challenges of the Rawcliffe Bridge Flood Defence Improvement Scheme

Date: 18 June 2014

Venue: The Brewery Tap, 18-24 New Station Street, Leeds LS1 5DL

Piping failure beneath the flood defence embankment at Rawcliffe Bridge in East Yorkshire was a significant risk, due to uncertainty in ground conditions as a result of the geological history of the site. Highly variable layers of clay, silt, sand and peat were present as a result of the formation of Lake Humber 18,000 years ago. A good understanding of the overall geological picture was essential to adopt a suitable and cost effective design solution.



Speaker Katie Quincey of Atkins will discuss the final solution of deep soil mixing to form a cut-off wall, which has only been adopted a couple of times within the UK.

[Visit the website for more information](#)

[Back to top](#)

Home Counties North Regional Group Field Trip: A Full-day Geology, Geoarchaeology & History Discovery Walk



Date: 21 June 2014

Venue: Hertford

Hertford, the County town of Hertfordshire, is built on Anglian glacial gravel and recent alluvium underlain by the Eocene Reading Beds. The latter consist of mottled clay, loamy sands and bands of flint pebbles. Four rivers meet in Hertford, the Mimram, the Rib, the Bean and the Lee (Lea), which formed the border between the Danes and the Saxons.

After a short talk on the local geology and how the Anglian ice sheet in Hertford diverted south-westwards towards London, we will look for Hertfordshire Puddingstone used as building stones in a public car park. The building stones and the archaeology in Hertford Castle will then be examined. We will then hunt for and try to identify the different types of Puddingstone.

After lunch at the Barge public house on Folly Island on the River Lee (you can bring a packed lunch), we will tour the Hertford Museum with its interesting geology displays of specimens collected locally and some local Puddingstone Roman artefacts (admission is free).

[Visit the website for more information](#)

[Back to top](#)

Petroleum Group: Geometry and Growth of Normal Faults

Date: 23-25 June 2014

Venue: The Geological Society, Burlington House, London

The past few decades have seen major advances in our understanding of many aspects of the kinematics of normal fault systems. In a conference convened on the 25th anniversary of the Geological Society's 1989 'Geometry of Normal Faults' conference, the full range of technical issues associated with the growth of normal faults, together with their practical applications, will be covered. The conference is in memory of Juan Watterson, one of the pre-eminent scientists in the field of 3-D fault analysis and modelling. There will also be a Conference Dinner on 24 June.



[Visit the website for more information](#)

[Back to top](#)

The 25th Petroleum Group Annual Dinner



Date: 26 June 2014

Venue: The Natural History Museum, London

The Petroleum Group Annual Dinner is one of the major social events in the petroleum industry calendar.

The evening will encompass drinks and canapé reception followed by a four course dinner, awards and presentations for achievements in the Petroleum industry, and speeches by the Chair of the Petroleum Group and the President of the Geological Society.

Table bookings for this event are now full, but if you would like to be added to the waiting list or receive information about next year's event, please email laura.griffiths@geolsoc.org.uk.

[Visit the website for more information](#)

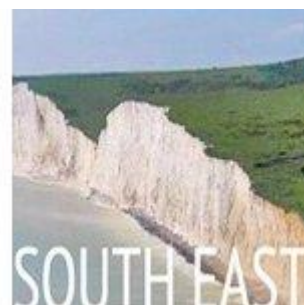
[Back to top](#)

South East Regional Field Trip: Ironstone Workings, Engineering Geology & Fossils

Date: 28 June 2014

Venue: Crawley and Mid-Sussex area

Our Field Trip led by Roger Smith and Jon Race (Southern Testing) will begin with a look at the 17th Century ironstone workings in the woods behind the Hawth Theatre, Crawley. We will then proceed to Wakehurst Place, Ardingly, where we will look at the cambering in the Ardingly Sandstone and learn how this had to be allowed for in the design of the foundations for the adjacent Millenium Seedbank.



In the afternoon we will proceed to Franklands Village, Haywards Heath to observe the site of a landslide which occurred in 1993. Time permitting, we may also be able to visit Whiteman's Green, Cuckfield where the bones of Iguanodon were found in the early 19th Century.

[Visit the website for more information](#)

[Back to top](#)

Home Counties North Regional Group: Palaeontology Workshop



Date: 5 July 2014

Venue: Burymead Museum Resource Centre, Hitchin

The Museum Resource Centre is part of Hitchin Museum but it is located in an industrial estate away from Hitchin Museum. It holds about 10,000 specimens of rocks, fossils and minerals and natural history specimens (the entire collection of Hitchin Museum and Letchworth Museum).

Those attending will have the opportunity to handle and study invertebrate and vertebrate fossil specimens. This workshop will specifically look at Jurassic fossils from the Bajocian, Bathonian and Callovian of the Middle Jurassic and the Oxfordian of the Upper Jurassic.

[Visit the website for more information](#)

[Back to top](#)

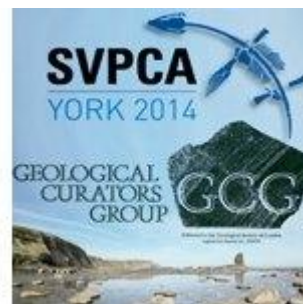
Geological Curators' Group Call for Abstracts: The Annual Symposium of Palaeontological Preparation & Conservation (SPPC)

Date: 2 September 2014

Abstracts & Registration Deadline: 20 June 2014

Venue: The King's Manor, University of York

SPCC will be the joint meeting of Geological Curators' Group (GCG) with the Symposium of Palaeontological Preparation and Conservation (SPPC). This is part of the week-long Symposium on Vertebrate Palaeontology and Comparative Anatomy meeting in York (SVP-CA) on all aspects of vertebrate palaeontology, although the GCG day can include almost any palaeontological topics. Registration is £20 for this day only, or £80 for the full week.

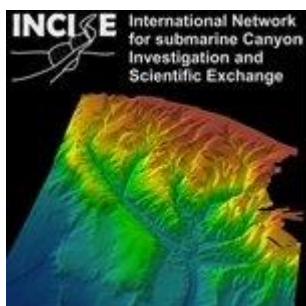


Talks and posters from GCG members would be especially welcome. We encourage all GCG members to attend, and submit your paper to the Geological Curator in due course.

[Visit the website for more information](#)

[Back to top](#)

Marine Studies Group Call for Abstracts: INCISE 2014: The 2nd International Symposium on Submarine Canyons



Date: 29 September-1 October 2014

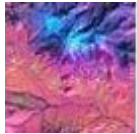
Abstracts Deadline: 1 July 2014

Venue: British Geological Survey, Murchison House, Edinburgh

Hosted by the BGS and sponsored by the [Marine Studies Group of the Geological Society](#), this symposium will combine traditional conference-style oral and poster presentations with a set of break-out working-group discussions.

[Visit the website for more information](#)

[Back to top](#)



Other News

The Specialist in Land Condition (SiLC) Register

The SiLC Register is an accreditation scheme for experienced practitioners working in land condition, for example contaminated land regeneration & development, and it is supported by a diverse range of professional bodies & organisations including the Geological Society. The scheme has developed progressively, establishing an important role in improving quality and standards across the sector.



SiLC has prepared the Land Condition Skills Development Framework (LCSDF), a capability based system to support an individual's career development, from graduate through to chartered status and similar senior level membership of a professional body. The benefits of using this framework include providing a structure for objective decisions in training and recruitment, its integration into a personal development plan and to assist in continuing to raise standards in the sector.

The LCSDF has been updated recently; [download Version 2 from the SiLC website](#).

[Visit the website for more information](#)

[Back to top](#)

The Museums Association Conference & Exhibition 2014



The Museums Association Conference & Exhibition is the largest event of its kind in Europe for museums and heritage professionals. The theme this year is 'Museums Change Lives'.

Over 1,500 senior staff will discuss the latest issues, discover new practice and meet the world's leading suppliers and consultants.

This year we also have a resilience room which will feature content that helps museums become more sustainable, looking at partnerships, funding and the workforce. There are a host of other sessions, practical workshops and training - all developed to facilitate fresh thinking.

[Visit the website for more information](#)

[Back to top](#)

