



Welcome to the fortnightly Geological Society newsletter.

In this issue:

- [President's Day and AGM 2014](#)
- [Annual Review 2013](#)
- [Petroleum Geology Sale and New Publications from the Geological Society](#)
- [Library Book and Print Sale - Visit us this May](#)
- [Upcoming Events](#)
- ['Women in Geoscience' Survey](#)
- [Specialist and Regional Group News and Events](#)

President's Day and AGM 2014



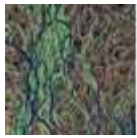
Earlier in the year, the Society announced the winners of its medals and funds 2014. The full list of winners is available on our website at www.geolsoc.org.uk/awards.

The Awards will be presented at President's Day, to be held this year on 4 June 2014. The day will begin with the Annual General Meeting followed by a buffet lunch with the award winners. After the Awards ceremony, the four senior medallists will give a short talk on their subject.

All Fellows are welcome to attend the afternoon events of President's Day for which there is no charge. Lunch with the Award winners is by ticket only at £27.50 per head. If you are a Fellow and would like to bring a guest to the lunch, please mention when registering.

Further information and details of how to register are available on the website.

[Visit the website for more information](#)
[Back to top](#)



Membership

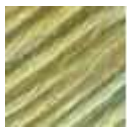
2013 Annual Review and Accounts

The Society's Annual Review and full audited accounts for 2013 are now available on the website.

The Annual Review will also be distributed to all members of the Society with the May issue of the Fellowship magazine *Geoscientist*, allowing Fellows a month to read it before the AGM.

[Visit the website for more information](#)

[Back to top](#)



Publications

Petroleum Geology Special Offer



For a limited time only, a selection of petroleum geology publications is available to purchase at the special discounted price of £25 each from our online bookshop.

Sale publications include Understanding Petroleum Reservoirs, Biostratigraphy in Production & Development Geology, Hydrocarbons in Crystalline Rocks and many more.

Offer ends midnight (BST) on Friday 2nd May.

[Visit the website for more information](#)

[Back to top](#)

New Publication: SP392 Tectonic Evolution of the Oman Mountains

Edited by H.R. Rollinson, M.P. Searle, I.A. Abbasi, A. Al-Lazki and M.H. Al-Kindi
Published 4 April 2014

The Oman Mountains contain one of the world's best-exposed and best-understood fold-thrust belts and the largest, most intensively studied ophiolite complex on Earth. This volume presents new international research focusing on the geology of the Oman Mountains, the foreland region, the carbonate platforms of Northern and Central Oman and the underlying basement complex.



[Visit the website for more information](#)
[Back to top](#)

New Publication: SP378 Advances in $^{40}\text{Ar}/^{39}\text{Ar}$ Dating: From Archaeology to Planetary Sciences



Edited by F. Jourdan, D.F. Mark and C. Verati
Published 31 March 2014

The $^{40}\text{Ar}/^{39}\text{Ar}$ method is one of the most versatile and trusted dating techniques, with countless applications in archaeology, tectonics, structural geology, orogenic processes and provenance studies, ore and petroleum genesis, volcanology, weathering processes and climate, and planetary geology.

This volume covers methodological developments, modelling, data handling, and direct applications of the $^{40}\text{Ar}/^{39}\text{Ar}$ technique.

[Visit the website for more information](#)
[Back to top](#)

New Publication: SP390 New Perspectives on the Caledonides of Scandinavia and Related Areas

Edited by F. Corfu, D. Gasser and D. M. Chew
Published 14 April 2014

Modern research on the Scandinavian Caledonides and related areas in Svalbard, East Greenland, Britain and Ireland both consolidates existing concepts and radically alters others.

This collection of 25 research and three overview papers provides a new perspective on these segments of the Caledonides and highlights important open questions.



[Visit the website for more information](#)
[Back to top](#)



Library and Information Services

Library Book and Print Sale - Visit us this May



During the month of May the Library will be holding its latest sale of second-hand or out-of-scope books, journals and maps.

Featuring hundreds of items covering geology and related subjects, the sale will take place upstairs in the main Library at Burlington House and is open to all. We will also be selling original lithographic prints by the Scottish geologist John MacCulloch, dating from 1819 - 1826, and the Swiss naturalist Louis Agassiz, dating from circa 1840.

The Library and book sale will remain open until 7pm on three

evenings during May:

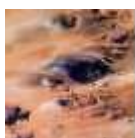
Friday 9 May; Friday 16 May; Wednesday 21 May

Visit us this May to pick up a bargain!

[Visit the website for more information](#)

Contact: library@geolsoc.org.uk

[Back to top](#)



Events

Lyme Regis Fossil Festival

Date: 2-4 May 2014

Venue: Multiple venues, Lyme Regis, West Dorset.

The 9th Lyme Regis Fossil Festival has the theme 'Citizen Science'. A full programme of talks and walks will run over the weekend, from the general to the latest research.

Lyme Regis sits at the heart of the Jurassic Coast, England's only *Natural* UNESCO World Heritage Site. A visit to different points along the coast will not only let you see 185 million years of the earth's history, but also give you access to many different kinds of fossils, from the gigantic to the microscopic.



[Visit the website for more information](#)

[Back to top](#)

Fermor Meeting 2014: Comparative Planetology



Date: 19-20 May 2014

Venue: The Geological Society, Burlington House, London

A great deal of new data on the terrestrial planets and moons has been produced recently from numerous planetary orbiters, together with rovers. This meeting is planned to bring together scientists who are studying aspects of planetary science on terrestrial planets in the inner solar system.

Presentations will fall under three broad themes:

- Planetary Crusts and Interiors,
- Planetary Surfaces and Surface Processes (including volcanism, tectonic activity, sedimentation, and impact cratering),
- and Planetary Climates and Atmospheres.

[Visit the website for more information](#)

[Back to top](#)

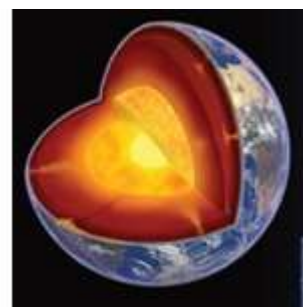
Call for Papers: Deep Earth Processes

Date: 15-16 September 2014

Venue: The Geological Society, Burlington House, London

Call for papers deadline: 16 May 2014

Our understanding of the Earth's deep interior has changed fundamentally in the last decade. The widely held view that the mantle is layered with respect to different geochemical reservoirs, and that the lower mantle has remained unchanged since the formation of the Earth 4.5 Ga, has been challenged by diverse evidence from geophysical images, mineral physics, the geochemistry of erupted melts, diamonds and their inclusions.

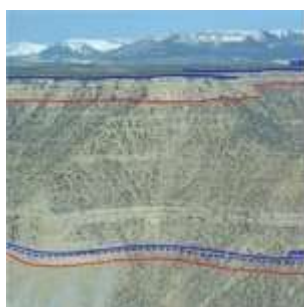


The meeting will draw together the latest ideas and results in a discussion of the key features of the inaccessible depths of our planet.

[Visit the website for more information](#)

[Back to top](#)

Call for Papers: William Smith Meeting 2014: The Future of Sequence Stratigraphy: Evolution or Revolution?



Date: 22-23 September 2014

Venue: The Geological Society, Burlington House, London

This meeting is intended to bring together a diverse range of sedimentary geologists to foster a critical examination of the current state of the sequence stratigraphic model, and to highlight robust new methods, concepts and protocols that could evolve or maybe even potentially revolutionise stratigraphic understanding and prediction.

The meeting will be organised into a series of themed sessions, with an emphasis on provocative but practical presentations. A chaired discussion at the end will aim to achieve a consensus view on how the subject should move forward.

[Visit the website for more information](#)
[Back to top](#)

Call for Sessions, Short Courses and Workshops: The 35th International Geological Congress

Date: 27 August-4 September 2016

Venue: International Convention Centre, Cape Town, South Africa

The International Geological Congress is held every 4 years, and is undoubtedly the most important activity of the International Union of Geological Sciences.

The Scientific Program for the 35th Congress is still in the early stages of development, and participation is encouraged. [Visit the Call for Sessions](#) if you are interested in coordinating a Sub-theme, Session, Workshop or Short Course. The main themes will be:

1. Geology in Society
2. Geology in Economy
3. Geology in Science

[Visit the website for more information](#)
[Back to top](#)



Education & Careers

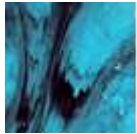
YES Network 'Women in Geoscience' Survey



The [YES Network](#) has just launched the 'Women in Geoscience Survey', a global initiative launched with the UK Chapter of the International Association for Geoethics, with the aim to establish the needs and challenges faced by women in geosciences.

[Take a few minutes to share your opinion](#), and please share the link below with your colleagues and friends.

[Visit the website for more information](#)
[Back to top](#)



Groups & Networks

Hong Kong Regional Group Conference

On 22 February 2014, the Hong Kong Regional Group held its second one-day conference, following on from the event on Engineering Geology in Geotechnical Risk Management held as part of the bicentennial celebrations in 2007.

The 2014 conference took up the theme 'Advances in Terrain Mapping and Analysis for Landslide Hazard Assessment', partly as a means of sharing the collective experience and knowledge gained through the various natural terrain hazard assessments conducted in Hong Kong and geohazard assessments conducted elsewhere in the region, and also as a means of funding a trip to Hong Kong by this year's Glossop Medal recipient Prof. Jim Griffith, who repeated his Glossop Lecture in the week preceding the conference, and also delivered the keynote address at the conference itself.



Overall the conference was a great success, primarily as a result of the hard work of the organising committee led by Dick Martin and also thanks to the high quality of the thirteen papers submitted, twelve of which were presented on the day and several of which can be downloaded [here](#).



Over 100 local practitioners and academics attended the event, hosted by the Department of Land Surveying and Geo-Informatics at the Hong Kong Polytechnic University, and the feedback received on both the presentations given and conference proceedings was extremely positive.

Stuart Millis
Chair, Hong Kong Regional Group

[Visit the website for more information](#)
[Back to top](#)

East Midlands Regional Group: The Caves of Nottingham: Engineering Characteristics of the Castle Sandstone

Date: 13 May 2014

Venue: British Geological Survey, Keyworth, Nottingham

Residents and visitors walk around the city centre of Nottingham blissfully unaware of the Triassic Nottingham Castle Sandstone upon which the buildings around them are founded. Beneath the city centre this sandstone contains hundreds of artificial caves that have been excavated through past centuries.

Engineering geologist and karst specialist Dr Tony Waltham will describe the caves and both the rock-mass and macro characteristics of the sandstone, and specifically comment on how geological time plays an important factor as to why the rock can readily be excavated and how it fails.



[Visit the website for more information](#)
[Back to top](#)

Marine Studies Group Call for Submissions: Chronology and Climate of the Last Interglacial



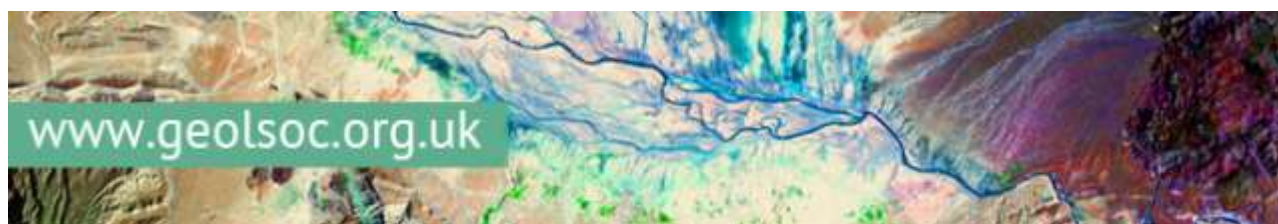
Date: 15 May 2014, 10am-5pm
Venue: The Geological Society, Burlington House, London
Registration Deadline: 6 May 2014

This one-day meeting aims to bring together a broad community of researchers interested in the climate, timing and duration of the last interglacial period.

There is scope for additions to the oral presentation programme, and we particularly welcome submissions for the poster session.

[Visit the website for more information](#)

[Back to top](#)



The Geological Society of London • Burlington House • Piccadilly, London W1J 0BG

<http://www.geolsoc.org.uk>

[Subscribe](#) | [Unsubscribe](#) | [Send to a Friend](#) | [Preferences](#) | [Report Spam](#)