



Welcome to the fortnightly Geological Society newsletter.

In this issue:

- [Vote for Council](#)
- [How does geology contribute to society, the economy and the environment?](#)
- [Online Bookshop Sale](#)
- [New Publications from the Geological Society](#)
- [Library Survey and Collection Development Policy](#)
- [Latest Online Papers](#)
- [Upcoming Events](#)
- [New Education and Careers Opportunities: Fellowships and Grants](#)
- [News From Our Specialist and Regional Groups](#)
- [EAGE/EFG Photo Contest 2014 - Call for Entries](#)
- [Looking for a Venue?](#)

## Vote for Council



Voting for the elections to Council 2014-2015 is now available to Fellows. Eight nominations have been received for the five vacancies on Council. To vote online, please log in to the GSL website and navigate to [www.geolsoc.org.uk/vote14](http://www.geolsoc.org.uk/vote14) where you will find further instructions.

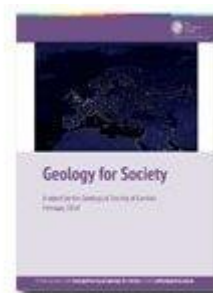
Please note, Fellows may vote only once, and voting will close on 31 March 2014. The results of this preliminary ballot will determine the list for the formal vote at the AGM to be held on 4 June 2014.

[Visit the website for further information](#)  
[Back to top](#)

## How does geology contribute to society, the economy and the environment?

The Society has launched a report entitled 'Geology for Society', aimed at policy-makers and the wider public. It outlines many of the ways in which geology is of value to society. Geology underpins the provision of most of the resources on which the UK's population and industry depend, including energy, minerals, water and food.

Many vital services also depend on geology, including management of the waste we produce; ground engineering for the construction of buildings, roads, dams, tunnels and other large infrastructure projects; and remediation of a wide range of environmental problems, including land contaminated by industrial use.

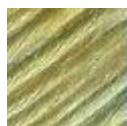


The report provides an overview of each of these essential areas and highlights the importance

of ensuring a skilled geoscience workforce and strong research base, to equip society to face the unprecedented challenges of the 21st century.

[Visit the website for more information](#)

[Back to top](#)



## Publications

### Bookshop Sale Now On

Our online bookshop sale is now on - make your selection from 80 publications, priced from £5-£35.

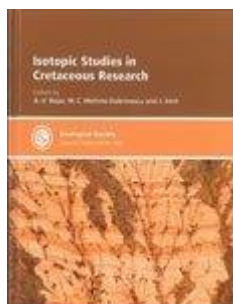
Sale ends at midnight GMT on Tuesday 18th February.

[Visit the website for more information](#)

[Back to top](#)



### New Publication: SP382 Isotopic Studies in Cretaceous Research



Edited by A.-V. Bojar, M. C. Melinte-Dobrinescu and J. Smit

Isotopic studies combined with geochemical, lithological, mineralogical and palaeontological investigations have been widely used in reconstructing Cretaceous marine and continental environments. Furthermore isotopic trends play an important role in the interpretation of the causes and consequences of biotic turnovers at stratigraphic boundaries as well as in global correlations.

[Visit the website for more information](#)

[Back to top](#)

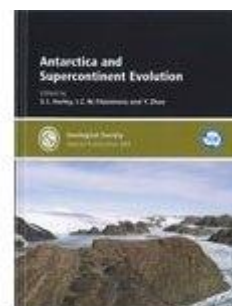
### New Publication: SP383 Antarctica and Supercontinent Evolution

Edited by S.L. Harley, I.C.W. Fitzsimons and Y. Zhao

Antarctica is key to understanding the formation and evolution of Gondwana and characterizing the continental fragments that must be pieced together to reconstruct earlier supercontinents. This volume highlights our improved understanding of the tectonic events that shaped Antarctica and how these potentially relate to supercontinent assembly and fragmentation.

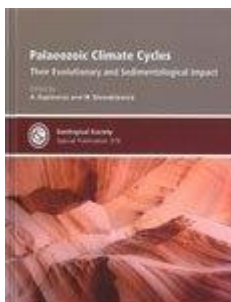
[Visit the website for more information](#)

[Back to top](#)



### New Publication: SP376 Palaeozoic Climate Cycles: Their

## Evolutionary and Sedimentological Impact



Edited by A. Gąsiewicz and M. Słowakiewicz

This volume covers palaeoclimate, cyclicity and environmental changes preceding one of the greatest biotic crisis in Earth history, i.e. the Permian-Triassic mass extinction event. There is much ongoing research on this event around the world and our knowledge about its causes, manifestations, scales, etc. in the fossil record is ever increasing.

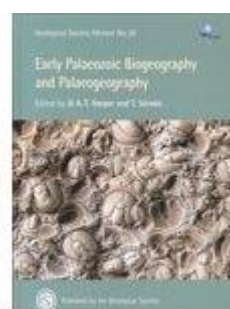
[Visit the website for more information](#)  
[Back to top](#)

## New Publication: M0038 Early Palaeozoic Biogeography and Palaeogeography

Edited by D.A.T. Harper & T. Servais

The Early Palaeozoic was a critical interval in the evolution of marine life on our planet. This Memoir presents the latest biogeographic data for the main fossil groups together with digitized palaeogeographic maps that confirm the central role of palaeobiogeography in understanding the evolution of Early Palaeozoic ecosystems and their biotas.

[Visit the website for more information](#)  
[Back to top](#)



## Library and Information Services

### Library Survey and Collection Development Policy



Last year some Fellows may have found themselves invited to respond to an online survey on Library usage and satisfaction. The results have been considered in the development of the Society's new Collection Development Policy, which is designed to provide a clear framework and a sound foundation for the future of the Library's collections.

You can [read the draft document online](#) - please email your comments and suggestions to [library@geolsoc.org.uk](mailto:library@geolsoc.org.uk) by 7 March.

[Visit the website for more information](#)  
[Back to top](#)

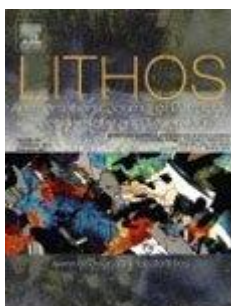
## Online Papers: Water Management in Protected Areas

Environmental Earth Sciences Vol. 71 No. 1 provides an overview of the methods and techniques available for protecting surface and subterranean water resources, water-linked ecosystems, soils, and the atmosphere. Most of these articles aim to provide criteria and methods for planning the protection of areas of high environmental value at local, regional and national scales. Athens passwords needed for offsite access.



[Visit the website for more information](#)  
[Back to top](#)

## Online Papers: Within Plate Continental Magmatism and its Mantle Sources



Lithos Vol.188 contains a collection of papers arising from an informal meeting on within-plate continental magmatism held at Padova University in 2012. These papers focus on the lithospheric mantle, continental tholeiitic LIPs and associated alkaline magmatism. Together, they underline the role of open vs. close system differentiation processes and of enriched mantle source rocks. Athens passwords needed for offsite access.

[Visit the website for more information](#)  
[Back to top](#)

## Online Papers: Granulites and Eclogites in Geodynamics

Gondwana Research Vol. 25 No. 2 aims to provide an overview of the origin and geodynamic significance of granulite and eclogite complexes. The papers included cover a wide range of topics from the geology, petrology and geochemistry of granulites and eclogites to geodynamics and numerical thermomechanical modeling. Athens passwords needed for offsite access.



[Visit the website for more information](#)  
[Back to top](#)

## Online Papers: Besançon - Karst Aquifers



Environmental Earth Sciences Vol. 71 No. 2 contains articles selected by the members of the Scientific Committee during the H2Karst Conference held in Besançon in September 2011. These have been expanded by the authors based on additional research and/or comments and discussions at the conference. Athens passwords needed for offsite access.

[Visit the website for more information](#)  
[Back to top](#)

---





## Events

### Communicating Geoscience: Lessons learned from engaging with the media, elected representatives and communities

Date: 28 February 2014

Venue: University College Dublin

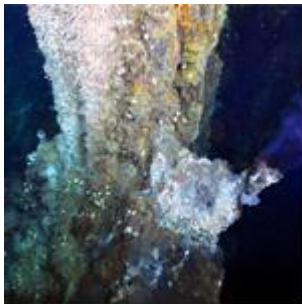
The Institute of Geologists of Ireland is hosting this seminar, the first of its kind in Ireland, which features public relations professionals and geoscientists from the public, private and academic sectors. It provides expert guidance and case studies from Ireland, the UK, Italy and the Mid-Atlantic of the successes and perils of communicating geoscience to the public. The content is relevant to all geoscientists working on the island and beyond.



[Visit the website for more information](#)

[Back to top](#)

### Lyell Meeting 2014: Deep Sea Chemosynthetic Ecosystems: Where they are found, how they work and what they looked like in the geological past



Date: 12 March 2014

Venue: Burlington House, London

This meeting will bring together geologists, marine biologists and ecologists, palaeontologists and geomicrobiologists to highlight recent achievements in our understanding of chemosynthetic ecosystems, past and present. The meeting will explore the complex relationships between geology and life at these sites; details of chemosymbiotic animal-microbial interactions; and how and when animals adapted to life in these extreme environments. Finally, recent hypotheses about the existence of similar ecosystems on

other Solar System planets will be presented.

[Visit the website for more information](#)

[Back to top](#)

### Fermor Meeting 2014: Comparative Planetology

Date: 19-20 May 2014

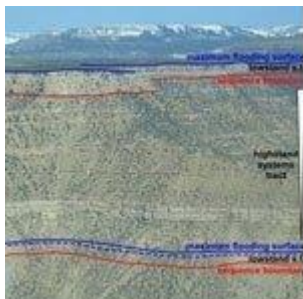
Venue: Burlington House, London

A great deal of new data on the terrestrial planets and moons has been produced recently from numerous planetary orbiters, together with rovers. This meeting is planned to bring together scientists who are studying aspects of planetary science on terrestrial planets in the inner solar system. Presentations will fall under three broad themes: Planetary crusts and interiors, planetary surfaces and surface processes (including volcanism, tectonic activity, sedimentation, and impact cratering), and planetary climates and atmospheres.



[Visit the website for more information](#)  
[Back to top](#)

## Call for Papers: William Smith Meeting 2014: The Future of Sequence Stratigraphy: Evolution or Revolution?



Date: 22-23 September 2014  
Venue: Burlington House, London

This meeting is intended to bring together a diverse range of sedimentary geologists to foster a critical examination of the current state of the sequence stratigraphic model, and to highlight robust new methods, concepts and protocols that could evolve or maybe even potentially revolutionise stratigraphic understanding and prediction. The meeting will be organised into a series of themed sessions, with an emphasis on provocative but practical presentations. A chaired discussion at the end will aim to achieve a

consensus view on how the subject should move forward.

[Visit the website for more information](#)  
[Back to top](#)



## Education & Careers

### Applications for the 2014 L'Oréal-UNESCO UK & Ireland For Women in Science Fellowships Now Open

L'Oréal UK & Ireland, the UK National Commission for UNESCO and the Irish National Commission for UNESCO, with the support of the Royal Society have partnered together to provide a dedicated UK & Ireland For Women in Science fellowship programme for women scientists at post-doctoral level to enable and/or facilitate promising scientific research in the life and physical sciences.

Four Fellowships will be awarded in 2014 to outstanding female postdoctoral scientists to assist them with their research.

[Visit the website for more information](#)  
[Back to top](#)



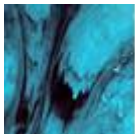
### Unlocking the Potential for Groundwater for the Poor (UPGro): Announcement of Opportunity



Outline proposals are invited for a new funding round as part of the Unlocking the Potential for Groundwater for the Poor in sub-Saharan Africa research programme funded by DFID, NERC and ESRC.

This call is for outline Consortium Grant proposals which will provide an opportunity for the world's best researchers to undertake large-scale, complex and interdisciplinary social and natural science research addressing the programme's aim of enabling sustainable use of groundwater for the benefit of the poor.

[Visit the website for more information](#)  
[Back to top](#)



## Groups & Networks

### HOGG: Call for Papers William Smith Meeting 2015



The History of Geology Group (HOGG) is organising the Geological Society's flagship William Smith Meeting 2015 to celebrate the publication of the first geological map of a nation 200 years ago.

HOGG are pleased to invite all interested participants to submit abstracts for oral presentations on topics of relevance. Presentations should last 25 minutes. International contributions are most welcome, although no financial assistance can be given. HOGG will provide a letter of invitation on request. 500-word abstracts should be submitted by 31 August 2014 to [John Henry](#).

[Visit the website for more information](#)  
[Back to top](#)

### Hong Kong Regional Group Events

#### Geophysics in Ground Investigation

On 12 February the Hong Kong Regional Group presents a lecture by Frank Collars on the application of geophysics in ground investigation.

[Visit the website for more information.](#)

#### Glossop Lecture and AGM

On 18 February, at 19.00, the Hong Kong Regional Group presents the Hong Kong version of the 2013 Glossop Lecture. Jim Griffiths will speak on engineering geology. This lecture will follow the Group's AGM, held at 18.30. [Visit the website for more information](#)



#### Advances in Terrain Mapping and Analysis for Landslide Hazard Assessment

On 22 February the Hong Kong Regional Group will hold a one-day conference on the theme of 'Advances in Terrain Mapping and Analysis for Landslide Hazard Assessment'. [Visit the Website for more information.](#)

## Metamorphic Studies Group: Call for Papers

*Metamorphic Studies Group*



The Metamorphic Studies Group will be holding its Research in Progress meeting and AGM on Wednesday 12 March 2014 at the Department of Environment, Earth and Ecosystems, The Open University (Milton Keynes). We encourage contributions on any aspect of metamorphic petrology and the link between metamorphism and other geological processes. Presentations from postgraduate students are particularly encouraged and a prize of £200 is offered for the best student presentation.

[Visit the website for more information](#)

[Back to top](#)

---

## Other News

### EAGE/EFG Photo Contest 2014: Call for Entries

The European Federation of Geologists (EFG) and the European Association of Geoscientists and Engineers (EAGE) are again jointly organising the Photo Contest 2014. The 12 best photos will be presented at the 76th EAGE Conference & Exhibition 2014, which will be held from 16-19 June 2014 in Amsterdam. Afterwards the top 12 will be exhibited at further EAGE and EFG events and will also be published in a calendar.



Once again, the theme of the Photo Contest 2014 will be 'Geoscientists at work'. All EFG and EAGE members are invited to submit photos that relate to this theme. The submitted photos should portray some aspect of the theme by, for example, depicting geological features of the earth relevant to geoscientific work, geoscientific activities (such as field geophysics, mapping or modelling) or the geoscientist's role in particular sectors.

[Visit the website for more information](#)

[Back to top](#)

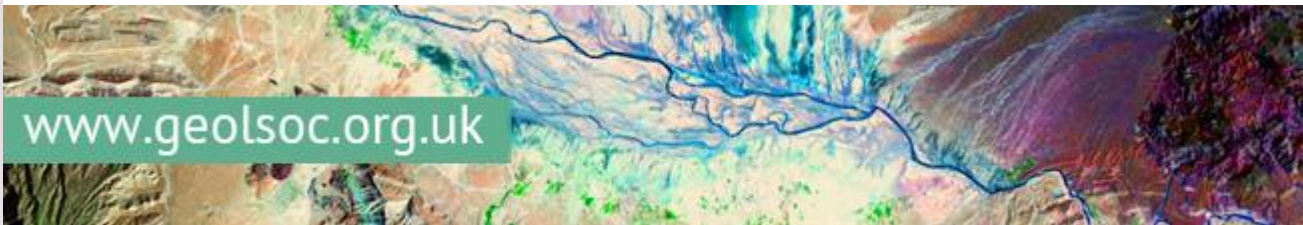
### Looking for a Venue?



The Geological Society is an exclusive venue for conferences, meetings and receptions in the heart of Mayfair. Our venue is equipped with all the conveniences of a modern conference centre, including a 172 seat Lecture Theatre, and three meeting rooms available for meetings, break-out groups and receptions.

[Visit the website for more information](#)

[Back to top](#)



[www.geolsoc.org.uk](http://www.geolsoc.org.uk)



The Geological Society of London • Burlington House • Piccadilly, London W1J 0BG

<http://www.geolsoc.org.uk>