

[View as Web Page](#)

[Unsubscribe](#)

[Send to a Friend](#)



Welcome to the fortnightly Geological Society newsletter.

In this issue:

- [Online Bookshop sale for one week only! 30 publications priced at £25 each](#)
- [2014 Research funds now open for applications](#)
- [Christmas and New Year closures](#)
- [Three Geological Society journals added to GeoScienceWorld](#)
- [Library Christmas booksale](#)
- [William Smith County map prints for sale](#)
- [New online papers from the library](#)
- [Upcoming events](#)
- [Specialist and Regional group events](#)
- [Geologist's Directory online update](#)

## Online Bookshop sale for one week only! 30 publications for £25



Our online bookshop sale is now on and features a selection of 30 Special Publications, Memoirs and other publications priced at just £25 each.

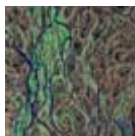
Visit our [online bookshop](#) to make a purchase before midnight GMT on Tuesday 19 November as stock of many sale items is limited.

Sale prices available only while stocks last.

[Visit the website for more information](#)

Email: [Bookshop sales](#)

[Back to top](#)



## Membership

### Research Funds

The 2014 round of Society Research Funds is now open for applications.

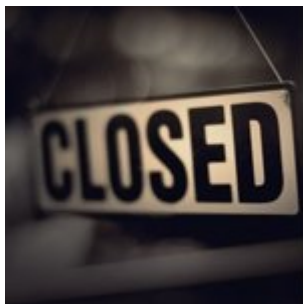
Applications for support from any of the Society funds must be made using the form which is available on the [Society Research Grants page](#).

[Visit our website for more information](#)

Email: [Stephanie Jones](#)



### Christmas and New Year Closure

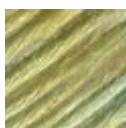


The Society (London and Bath offices) will be closed for the Christmas and New Year holidays, from 24 - 31 December inclusive.

We will re-open on Thursday 2 January 2013.

Email: [Stephanie Jones](#)

[Back to top](#)



## Publications

### Geological Society journals added to GeoScienceWorld

Three journals from The Geological Society of London have been added to GeoScienceWorld.

The Journal of Micropalaeontology (JM), Scottish Journal of Geology (SJG) and the Proceedings of the Yorkshire Geological Society (PYGS) have been added to the growing collection of prestigious Earth science journals on GeoScienceWorld.



Neal Marriott, Director of Publishing, Library and Information Services for the Geological Society of London said: "The Geological Society of London is delighted that these 3 journals will

benefit from increased visibility and the range of functions and services that GSW has developed. The exposure which GSW's extensive subscriber base provides will serve the needs of the community of geoscientists and authors well."

[Visit the GeoScienceWorld website for more information](#)

[Back to top](#)



## Library and Information Services

### Library Christmas Book Sale



From 25 - 29 November the Library will be holding a sale of duplicate and out-of-scope stock in the Main Library - upstairs at Burlington House, Piccadilly, London.

All are welcome to visit us and browse hundreds of items including Geological Society Special Publications, USGS Professional Papers, SEPM series CD-Roms, special issues of leading journals, and popular science titles on subjects such as volcanoes, natural disasters, fossils, archaeology and early human history.

[Visit the website for more information](#)

Email: [Library](#)

### William Smith County Map prints for sale

The Geological Society is proud to offer prints of all 21 of William Smith's Geological county maps first published between 1819 and 1824 by John Cary.

Each print is available at original size for a price of £36 incl. VAT and postage for Fellows of the Society (or £30 outside the EU with not VAT payable).

To view or order prints, [visit the William Smith County Map page](#).

[Visit the website for more information](#)

Email: [Library](#)

[Back to top](#)



### Online Papers - Slope Tectonics: Structures and Slope Failures



Tectonophysics vol.605 gathers together a total of 11 papers that can be classified into the following two categories: (1) structures and fabrics newly formed due to slope failure and (2) reactivation of pre-existing geological structures by slope failures.

Most of these contributions were presented at the "2nd Conference on Slope Tectonics" on 6-10 September 2011 in Vienna.

Athens passwords needed for offsite access.

[Visit the website for more information](#)

Email: [Library](#)

## Online Papers - Magma System Response to Edifice Collapse

Journal of Volcanology and Geothermal Research vol.263 emerged from a project focused on understanding sector-collapse-induced volcanism through a multi-disciplinary comparative study of Bezymianny, Shiveluch, and Mount St. Helens volcanoes.

Work included volcanological, geophysical, and geochemical studies, which produced new high-quality seismic and deformation data sets for the 2006-2011 period of eruptive activity at Bezymianny Volcano, as well as a detailed geochemical data set for the entire period of its eruptive activity.

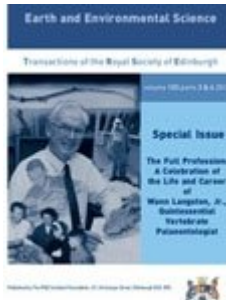


Athens passwords needed for offsite access.

[Visit the website for more information](#)

Email: [Library](#)

## Online Papers - Vertebrate Palaeontology



Earth and Environmental Science Transactions of the Royal Society of Edinburgh vol.103 no.3&4 contains discussions of empirical and conceptual issues surrounding fossil vertebrates whose taxonomic breadth spans much of Tetrapoda, and whose chronological range extends from the Permian through the Quaternary.

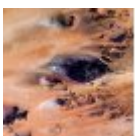
This special issue was produced in honour of Wann Langston Jr.

Athens passwords needed for offsite access.

[Visit the website for more information](#)

Email: [Library](#)

[Back to top](#)



Events

## Careers in Earth Science

Date: 20 November 2013

Venue: Our Dynamic Earth, Edinburgh

This Careers event is being run by the Earth Science Scotland community, and is co-badged by the Geological Society and the Petroleum Exploration Society of Great Britain.

The day will include presentations from early career earth scientists from the oil and gas, mining, geotechnical, environmental and research sectors, an exhibition by employers and a Higher Education fair promoting MSc and PhD programmes.



[Visit the website for more information](#)

Email: [Naomi Newbold](mailto:Naomi.Newbold@geological-society.org)

## Careers Day



Date: 20 November 2013

Venue: British Geological Survey, Nottingham

Careers Day is the essential meeting place for geoscience students and the geoscience industry, where university undergraduates and postgraduates will have the chance to find out about the latest career options and talk to industry leaders about how they might gain entry into that sector.

[Visit the website for more information](#)

Email: [Naomi Newbold](mailto:Naomi.Newbold@geological-society.org)

[Back to top](#)

## HEA Workshop: Postgraduates who teach Geography, Earth and Environmental Sciences

Date: 18 November 2013

Venue: The Education Centre, Royal Geographical Society, London

The Higher Education Academy is offering a one day workshop designed for postgraduate students and other non-permanent academic staff / associates who are involved in teaching and supporting student learning specifically in the GEES disciplines (teaching, demonstrating, fieldwork assistants, guest lecturing, marking, etc).



The workshop is free for attendees from HEA subscribing institutions, £75 for everyone else. [Visit the website](#) to find out if your institute qualifies.

[Visit the website for more information](#)

Email: [Helen Walkington](mailto:Helen.Walkington@heacademy.org)

## EFG Workshop: European Water Policy - Challenges for Hydrologists

Date: 22 -23 November 2013  
Venue: Royal Belgian Institute of Natural Sciences, Brussels

The European Federation of Geologists Panel of Experts on Hydrogeology supported by IAH, WSSSTF, EuroGeoSurveys and BGS are hosting a workshop on 'European Water Policy: Challenges for Hydrogeologists'.



This workshop will highlight those areas where hydrogeologists are playing an important role in the implementation of the Water Framework Directive and the new business opportunities now opening up to firms in hydrogeology with the publication of the Blueprint. The workshop will also provide a unique opportunity to obtain a corresponding official acknowledgement of this role by the European Commission.

[Visit the website for more information](#)

Email: [EFG](mailto:EFG)

[Back to top](#)

## Ecosystem Services Conference - Come to Town



Date: 25 - 28 November 2013  
Venue: The Grange City Hotel, London

The 2013 Ecosystem Services 'Come to Town' Conference will bring together Europe's leading policy makers, urban planners, developers, contractors, city architects, builders, manufacturers, community groups, utility

companies and NGO's.

The conference will demonstrate the business case for Green Infrastructure and identify planning and design decisions that have the greatest economic, environmental and social impact.

[Visit the website for more information](#)

Email: [Julian Halse](mailto:Julian.Halse)

[Back to top](#)

## The Geological Society President's Lecture

Date: 5 December 2013  
Venue: The Public Library, Scarborough

The President of the Geological Society is a patron of 'Rotunda - the William Smith Museum of Geology' and in recognition of the significance of the museum to the geological world and the role of the President as patron, the Society has agreed to institute a biennial public lecture in Scarborough entitled "The Geological Society President's Lecture".

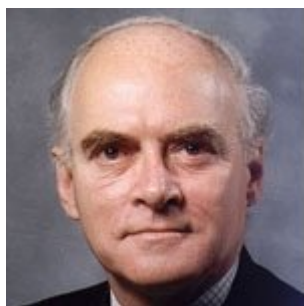


The first lecture, on "Landslides and Subsidence: Engineering Geology in an Age of Austerity" will be given by our current President, David Shilston,

[Visit the Geolsoc website for more information](#)

[Visit the Rotunda Museum website](#)

## Symposium in Honour of David Roberts



Date: 14 - 16 April 2014

Venue: Dept of Earth Sciences, Royal Holloway University of London

### Call for Abstracts

A three day international conference is being organised to honour the life and work of David Roberts who sadly passed away in July 2013. David was the Distinguished Advisor in Global Exploration at BP; the highest geoscience role in the company. He was also visiting Professor and an Honorary Fellow of Royal Holloway University of

London.

We are seeking high-level contributions for this timely conference - particularly from younger geoscientists who were mentored or taught by David. Both oral and poster presentations will be welcome. Please submit abstracts by 15 December 2013.

[Visit the website for more information](#)

Email: [Roberts Symposium](#)

## Shearwater: Geology Under Pressure

### Shell London Lectures 2013

Date: 20 November 2013

Venue: The Geological Society, London

The next Shell London lecture, 'Shearwater: Geology Under Pressure' will be delivered by Caroline Gill (Shell) on 20 November.

The lecture will be given twice on the same day, once at 3pm and then at 6pm.

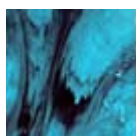
Entry to the lectures is free to all, but you must pre-register. Please note that both the 3pm and 6pm lectures are now full. If you would like to be added to a waiting list for either lecture then please contact Naomi Newbold

[Visit the website for more information](#)

Email: [Naomi Newbold](#)



[Back to top](#)



## Groups & Networks

### East Midlands Regional Group: Gypsum Geohazards and Road Construction



Date: 18 November 2013  
Speaker: Dr Tony Cooper  
Venue: De La Beche Conference Suite, British Geological Survey

The East Midlands Regional Group is hosting a talk on 'Gypsum Geohazards and Road Construction'.

This talk will look at the geology of the gypsum deposits in the Midlands and Yorkshire, the hazards associated with them and some of the investigation and mitigation measures applied to cope with

the problems

[Visit the website for more information](#)

Email: [David Bailey](#)

## South East Regional Group: The Search for Onshore Analogues for the North Sea Chalk

Date: 19 November 2013  
Speaker: Prof Rory Mortimore  
Venue: The Gatwick Manor Hotel, Crawley

The South East Regional Group is hosting a joint meeting with the ICE on 'The Search for Onshore Analogues for the North Sea Chalk.'

This presentation will describe the search for potential analogues in coastal cliffs and quarries from Yorkshire to Sussex as well as along the coast of Normandy.



[Visit the website for more information](#)

Email: [SERG](#)

## Central Scotland Regional Group: Evening Lecture

Date: 19 November 2013  
Speaker: Dr Geeta Puri  
Venue: British Geological Survey, Edinburgh



The Central Scotland Regional Group is hosting an evening talk on 'Scottish Peatlands' at the British Geological Survey.

[Visit the website for more information](#)

Email: [Lesley McLellan](#)

[Back to top](#)

## Hong Kong Regional Group: Careers Day



Date: 20 November 2013  
Venue: University of Hong Kong

The Hong Kong Regional Group is hosting a Careers Evening. This is an opportunity for students to learn about the Geological Society and explore what Geoscientists do.

Prior registration is required. For enquiries, please visit the [Society of Earth Sciences \(HKU\)](#) Facebook page

[Visit the website for more information](#)

Email: [Kitty Chan](#)



## South West Regional Group: AGM and Presentation of the Fredrick Sherrell Award



Date: 20 November 2013  
Speaker: Dr John Grimes  
Venue: Dolphin Hotel, Bovey Tracey, Devon

The South West Regional Group is having their Annual General Meeting. At this event, the Frederick Sherrell Award for 2013 will be presented to Dr John Grimes (John Grimes Partnership Ltd).

Dr Grimes will present a talk detailing the highlights of his career.

[Visit the website for more information](#)

Email: [Jonathan King](#)

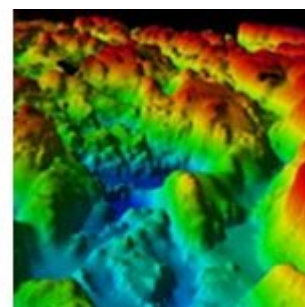
[Back to top](#)

## Marine Studies Group: Our Hidden Geology and Geomorphology Conference - Sea Bed Mapping in the 21st Century

Date: 21 November 2013  
Venue: Royal Society Edinburgh

The Marine Studies Group is holding a joint conference with the Royal Society of Edinburgh and MAREMAP partners: British Geological Survey, Scottish Association for Marine Science and the National Oceanography Centre.

This conference will highlight the science and understanding which is revolutionising our understanding of the seabed and shallow geology. The conference and follow-up volume will provide a showcase for this research and bring together government, academia and the commercial sector to share techniques and understanding.



[Visit the website for more information](#)

Email: [Alan Stevenson](#)

## Hong Kong Regional Group: GSL Training Scheme, Chartership, Accreditation and Scrutineering



Date: 21 November 2013  
Speaker: Bill Gaskarth

The Hong Kong Regional Group is hosting a talk on chartership titled "GSL Training Scheme, Chartership, Accreditation and Scrutineering".

Bill Gaskarth, Chartership Officer for the Geological Society, will deliver the talk.

[Visit the website for more information](#)

Email: [Kitty Chan](#)

## Hong Kong Regional Group: Annual Dinner

Date: 22 November 2013  
Speaker: David Shilston  
Venue: Hong Kong Football Club, 3 Sports Road, Happy Valley

The Geological Society of London is celebrating the 12th Anniversary of the founding of the Hong Kong Regional Group. All Fellows and guests are cordially invited.

Our Guest of Honour is David Shilston (President of the Society) who will be giving a talk entitled "LUSI: the Geology and Engineering of a Mud Volcano disaster in Java". The talk will describe LUSI (Lumpur Sidoarjo), its evolution, its impact, and what can be said about its future development.



[Visit the website for more information](#)

Email: [Kitty Chan](#)

## Western Regional Group: Offshore Foundations and the Humber Estuary



Date: 26 November 2013  
Speakers: Imad Alobaidi and Andrew Benson, Atkins  
Venue: The Hub, Aztec West, Bristol

The Western Regional Group is pleased to be hosting a lecture on 'Offshore Foundations and the Humber Estuary'.

[Visit the website for more information](#)

Email: [Western Regional Group](#)

[Back to top](#)

## Home Counties North Regional Group: The Rocky Road as Geological Advisor to the Chiltern Society

Date: 27 November 2013  
Speaker: Haydon Bailey  
Venue: Affinity Water, Tamblin Way, Hatfield Business Park

The Home Counties North Regional Group is hosting a lecture titled 'The Rocky Road as Geological Advisor to The Chiltern Society'

The talk will be delivered by Haydon Bailey, Geological Officer for The Chiltern Society.



[Visit the website for more information](#)

Email: [Home Counties North](#)

## Near Surface Geophysics Group: The Application of Geophysical Methods in UK Unexploded Ordnance (UXO) Risk Management



Date: 5 December 2013  
Venue: British Geological Survey, Keyworth, Nottingham

This one day event will showcase the latest research and best practice being applied in UXO detection and classification in the UK, and demonstrate the influence of this work on overall UXO risk management.

By providing a forum for discussing the capabilities of geophysical methods and the communication of results, the meeting will promote transparency and understanding among practitioners and clients.

Advanced registration is requested as places are limited.

[Visit the website for more information](#)

Email: [Brian Barrett](#)

## The Geological Remote Sensing Group: Status and Developments in Geological Remote Sensing - 24th Annual Meeting

Date: 9 - 11 December 2013  
Venue: Sachsen-Anhalt Landesvertretung, Berlin-Mitte, Berlin

The Geological Remote Sensing Group (GRSG) conference organised in association with the DGPF, University of Halle-Wittenberg, BGR and DLR will cover a broad range of remote sensing topics.

The international meeting will include a small exhibition. Networking events include ice-breaker (8 Dec) and a conference dinner (10 Dec) to be held in the spectacular dinosaur hall of Berlin's Natural History Museum.

Reduced rate registration fees for GRSG, GeolSoc and RSPSoc members.

[Visit the website for more information](#)

Email: [Jason Manning](#)



[Back to top](#)

Other

## Geologist's Directory Online Update



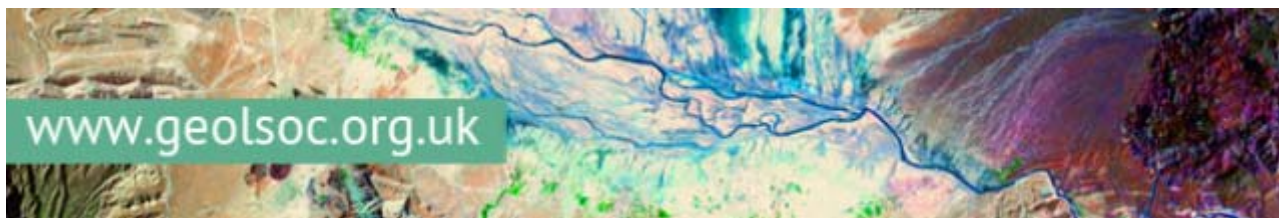
The latest refresh is underway for [www.thegeologistsdirectory.com](http://www.thegeologistsdirectory.com) which is the reference source for contractors and consultants in the Earth Sciences sector and endorsed by The Geological Society.

To ensure your company is included and find out how promotion of your services on the site could help generate enquiries for your services please email [geo@boundaryimedia.co.uk](mailto:geo@boundaryimedia.co.uk) or call the directory team on 01892 771047 .

[Visit the website for more information](#)

Email: [geo@boundaryimedia.co.uk](mailto:geo@boundaryimedia.co.uk)

[Back to top](#)



The Geological Society of London • Burlington House • Piccadilly, London W1J 0BG

<http://www.geolsoc.org.uk>

[Subscribe](#) | [Unsubscribe](#) | [Send to a Friend](#) | [Preferences](#) | [Report Spam](#)

---

This email is confidential and is intended for the addressee(s) only. If you have received it in error, please do not reproduce or disseminate the contents of this message; please contact us by return email, or by telephone on +44 (0)20 7434 9944, and delete this message and any copies of it from your computer systems. The Society does not accept liability for individuals' opinions, advice or views expressed in this email. The Geological Society of London is a registered charity, number 210161, registered address Burlington House, Piccadilly, London, W1J 0BG.

This e-mail has been scanned for all viruses by Star Internet. The service is powered by MessageLabs. For more information on a proactive anti-virus service working around the clock, around the globe, visit: <http://www.star.net.uk>

---

This e-mail has been scanned for all viruses by Star on behalf of The Geological Society. The service is powered by MessageLabs. For more information on this please contact Kevin Perry at [kevin.perry@geolsoc.org.uk](mailto:kevin.perry@geolsoc.org.uk)