

[View as Web Page](#)

[Unsubscribe](#)

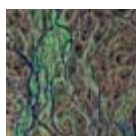
[Send to a Friend](#)



Welcome to the fortnightly Geological Society newsletter.

In this issue:

- [Register now for a Geofacets webinar](#)
- [2014 Research funds now open for applications](#)
- [Christmas and New Year closures](#)
- [New online papers from the library](#)
- [Upcoming events](#)
- [Specialist and Regional group events](#)
- [A career opportunity with the Secretariat of the Pacific Community](#)



Membership

Register now for a Geofacets Webinar



From 2014 GSL is offering Fellows individual access to Geofacets-GSL Millennium Edition. This exclusive feature customised for GSL Fellows includes more than 24,000 maps from the Lyell Collection published from 2000 to the present.

Elsevier and GSL have partnered together to provide this innovative web-based map search tool for geoscientists. You can now login to renew your Fellowship online and add Geofacets-GSL Millennium Edition to your membership from 2014 - access renewals under MyGSL.

If you'd like to find out more, please [join us for a webinar to see a live demonstration of Geofacets](#) and discover the power of this new web-based map search tool. There are a number

of webinar sessions available:

- Tuesday, November 5, 2013: UK time 2pm, CET 3pm, EST 9am
- Tuesday, November 5, 2013: UK time 7am, HKT 3pm, Melb/Syd 5pm
- Tuesday, December 3, 2013: UK time 2pm, CET 3pm, EST 9am
- Tuesday, December 3, 2013: UK time 7pm, CET 8pm, EST 2pm

[Visit the website for more information](#)

Email: [Membership](#)

[Back to top](#)

Research Funds

The 2014 round of Society Research Funds is now open for applications.

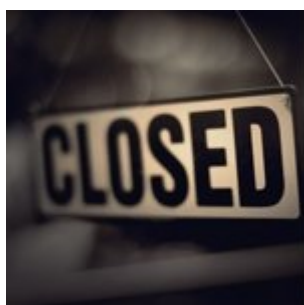
Applications for support from any of the Society funds must be made using the form which is available on the [Society Research Grants page](#).

[Visit our website for more information](#)

Email: [Stephanie Jones](#)



Christmas and New Year Closure



The Society (London and Bath offices) will be closed for the Christmas and New Year holidays, from 24 - 31 December inclusive.

We will re-open on Thursday 2 January 2013.

Email: [Stephanie Jones](#)

[Back to top](#)



Library and Information Services

Online Papers - Geosciences of the Himalaya-Karokoram-Tibet Orogen

International Journal of Earth Sciences vol.102 no.7 is a thematic volume on the geosciences of the Himalaya-Karakoram-Tibet Orogen consisting of 18 papers and 2 Geosites.

Topics include rivers and lakes, earthquake geology, faults and active tectonics, crustal shortening and deformation, and thermal metamorphism.

Athens passwords needed for offsite access.

[Visit the website for more information](#)

Email: [Library](#)



Online Papers – South Atlantic Margins



Tectonophysics vol.604 presents new results on the dynamic evolution of the South Atlantic. These have emerged from several large research programs and recently released, previously confidential, industry data.

The evaluation of this data covering shallow and deep seismic profiles as well as seismology, age dating, thermochronology, potential fields, and wells is done with a multi-scale and integrated approach, crossing the traditional boundary between offshore and onshore studies and addressing both conjugate margins of the South Atlantic.

Athens passwords needed for offsite access.

[Visit the website for more information](#)

Email: [Library](#)

Online Papers - PACLIM: Proceedings of the 25th Pacific Climate Workshop

Quaternary International vol.310 contains 13 papers and 73 abstracts from the 25th Pacific Climate Workshop. These use a range of approaches to study climate variability.

The longer papers include ones on vegetation change in China in the last 40,000 years, Holocene coquina beachrock from Huangdong, late Quaternary sea-level change in Canada, and rock glaciers and periglacial talus landforms in the Sierra Nevada among other topics.

Athens passwords needed for offsite access.

[Visit the website for more information](#)

Email: [Library](#)



[Back to top](#)



Events

Founders Day Lecture and Dinner 2013

Date: 13 November 2013

Venue: The Geological Society and Le Meridien Hotel, Piccadilly

There are limited places still available at the 2013 Founders' Day lecture, which will review the remarkable life of one of the 13 founders of the Society, James Parkinson. His pioneering work in medicine led to him identifying the Shaking Palsy, later known as Parkinson's disease, and he put the study of fossils on the scientific map of Britain.



Dinner will follow at Le Meridien Hotel, Piccadilly.

[Visit the website for more information](#)

Email: [Naomi Newbold](mailto:Naomi.Newbold@geological-society.org)

Tellus South West Conference



Date: 31 October 2013

Venue: The Eden Project, St Austell

The Natural Environment Research Council is holding a conference to tell researchers and potential collaborators more about our progress with Tellus South West.

The event will include multiple speakers with Mike Young, Director of the Geological Survey Northern Ireland, delivering the keynote speech.

The programme includes a series of presentations, early results from Tellus South West's airborne survey, presentations by potential collaborators and data users and a plenary discussion with all stakeholders.

[Visit the website for more information](#)

Email: [Tellus South West](mailto:TellusSouthWest@nerc.ac.uk)

The Festival of Geology

Date: 2 November 2013

Venue: University College London

The Geological Association and Rockwatch are hosting a free Festival of Geology.

This fun packed, family friendly day will include exhibitors, a Rockwatch Discovery room with activities for children, geological talks, an amateur photography competition, walks and field trips.



[Visit the website for more information](#)

Email: [The Geological Association](mailto:geological-association@geological-association.org)

[Back to top](#)

Endorsed CPD Course: Aqueous Geochemistry



endorsed training course

Date: 4 - 8 November 2013

Venue: School of Engineering and Geosciences, Newcastle University

This course introduces the quantitative, equilibrium-based methods which are used to understand the controls on the chemical composition of both surface and groundwaters.

The course is aimed at environmental geochemists, environmental engineers and geologists interested in understanding the factors which control the chemical composition of natural waters and geochemical processes that occur in aquatic, terrestrial and subsurface environments.

[Visit the website for more information](#)

Email: [Professional development unit](#)

Endorsed CPD Course: Soil & Rock Description and Site Investigation

Date: 11 - 15 November 2013

Venue: University of Sussex

Taught by Prof David Norbury, author of 'Soil and Rock Description', this course provides an introduction to methods of site investigation, logging of soil and rock core, sedimentology, stratigraphy, structure, and soil and rock testing.



endorsed training course

The course is taught in the field and laboratory, where participants get to produce engineering and sedimentological logs from boreholes donated to the lab.

Fellows of the GSL are eligible for 10% discount.

[Visit the website for more information](#)

Email: [John Barlow](#)

[Back to top](#)

Endorsed CPD Course: Soil and Rock Logging Course



Date: 12 November 2013

Venue: EM Drilling, Bath

Accurate engineering description of soils and rock is key to the success of civil engineering or geo-environmental site investigations.

This course will provide comprehensive practical, hands-on experience in the description of soil and rock for both engineering and environmental investigations based on Eurocode 7 - BS5930 ("Code of practice for site investigations").

[Visit the website for more information](#)

Email: [Christine Butenuth](#)

Museums Association Conference & Exhibition 2013

Date: 11 - 12 November 2013
Venue: BT Convention Centre, Liverpool

The Museums Association Conference & Exhibition 2013 is the largest conference and exhibition for museums and heritage professionals in Europe.



MUSEUMS
ASSOCIATION

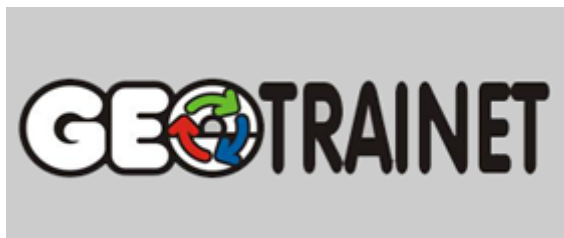
This years conference themes are health and wellbeing, museums of the future, and the emotional museum. The themes will explore the changes that staff and organisations face, and discuss how to survive and flourish in the new landscape.

[Visit the website for more information](#)

Email: [Museums Association](#)

[Back to top](#)

GeoTrainet Events



Date: 14 - 15 November 2013
Venue: Cultural Association of Southern Sweden, Sweden

GeoTrainet is pleased to invite you to two events to celebrate the launch of the new organisation.

A free event 'Geo Energy: Planning and Good Practice', and a training course 'Update Training for Trainers.' Registration, for both events, closes on 12 November 2013.

[Visit the website for more information](#)

Email: [GeoTrainet](#)

Shearwater: Geology Under Pressure

Shell London Lectures 2013

Date: 20 November 2013
Venue: The Geological Society, London

The next Shell London lecture, 'Shearwater: Geology Under Pressure' will be delivered by Caroline Gill (Shell) on 20 November.

The lecture will be given twice on the same day, once at 3pm and then at 6pm.

Entry to the lectures is free to all, but by ticket only, places are allocated on a ballot basis.

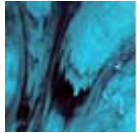
To enter the ballot please contact Naomi Newbold and state whether you would prefer to attend the 3pm or the 6pm lecture.

[Visit the website for more information](#)

Email: [Naomi Newbold](#)



[Back to top](#)



Groups & Networks

The Hydrogeological Group: What's New in Hydrogeology



Date: 6 November 2013
Venue: University of Leeds

The Hydrogeological Group, International Association of Hydrogeologists and Earth Surface Science Institute, School of Earth and Environment, University of Leeds have come together to host a research poster meeting on "What's New in Hydrogeology".

The meeting is a platform for recent and current research and practice in hydrogeology.

Advanced registration is required as places are limited.

[Visit the website for more information](#)

Email: [Chris Jackson](#)

Hong Kong Regional Group: Geophysics in Identifying Cavity and Marble on Site

Date: 12 November 2013
Speaker: Frank Collar
Venue: Mariner's Club, TST

The Hong Kong Regional Group is hosting an evening talk titled 'Geophysics in Identifying Cavity and Marble on Site'.



[Visit the website for more information](#)

Email: [Kitty Chan](#)

[Back to top](#)

West Midlands Regional Group: Helpston Groundwater Remediation Project Lecture



Date 12 November 2013
Speaker: Leon Warrington
Venue: Telford Campus, University of Wolverhampton

In the 1980's, two landfill sites at Helpston, near Peterborough, were used for the disposal of an agricultural pesticide called mecoprop. This pesticide has since leaked into a principal aquifer, causing widespread pollution which is adversely impacting upon public water supplies.

This lecture will present an overview of the project, including geology, hydrogeology and contaminant distributions which have been assessed to build up a good conceptual

understanding of the system.

[Visit the website for more information](#)

Email: [Daniel Welch](#)

The Yorkshire Regional Group and the Yorkshire Geotechnical Group Joint meeting

Date: 12 November 2013
Speaker: Damian McGirr
Venue: Sheffield University

The Yorkshire Regional Group is hosting a joint meeting with the Yorkshire Geotechnical Group.

Damian McGirr will deliver a presentation on Tunnelling.

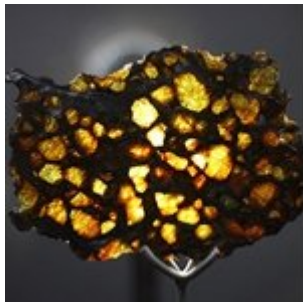


[Visit the website for more information](#)

Email: [Alex Keech](#)

[Back to top](#)

Western Regional Group: Incoming! Why we Should Stop Worrying and Learn to Love the Meteorite



Date: 12 November 2013
Speaker: Ted Nield
Venue: SH Reynolds Lecture Theatre, University of Bristol

Ted Nield, Editor of the Geological Society Fellowship's monthly magazine Geoscientist, talks about the ideas behind his most recent book, Incoming!, (Granta Books 2011) and what meteorite strikes on Earth tell us about the complex business of creating history.

[Visit the website for more information](#)

Email: [Western Regional Group](#)

Engineering Group: Glossop Lecture

Date: 13 November 2013
Speakers: Prof Jim Griffiths and Arthur Chueng
Venue: Royal Geographic Society, London

The Engineering Group is hosting their 14th Glossop Medal Lecture and 17th Glossop Award presentation. Professor Jim Griffiths will deliver the lecture 'Feet on the Ground: Engineering Geology, Past, Present and Future.'

Following the lecture there will be a Glossop Reception to be held at Ognisko, 55 Princes's Gate, Exhibition Road, SW7 2PN

Registration is required for the Glossop Reception and closes on 8 November 2013.

[Visit the website for more information](#)

Email: [Tom Casey](#)



[Back to top](#)

South Wales Regional Group: Lecture 'Credit Due to the Few' and a Careers Evening



Date: 13 November 2013
Speaker: Dr Ted Rose
Venue: Cardiff University

The British Army made use of few geologists during World War II, however, these 'field force' geologists were pioneers of the present-day Territorial Army geologists. They were complemented by other expertise, within or drawn from (Well) Boring Sections of the Royal Engineers.

From 1943 this also included military geologists from India, the UK and the USA who compiled specialist reports and innovative terrain intelligence maps focused on ground and groundwater conditions.

[Visit the website for more information](#)

Email: [South Wales](#)

Careers Evening

Date: 14 November 2013
Venue: Cardiff University

The South Wales Regional Group is involved in the Annual Careers Evening hosted by Cardiff University.

[Visit the website for more information](#)

Email: [South Wales](#)



Northwest Regional Group: Assessment and Design Mitigation for Rockfalls in Quarries



Date: 21 November 2013
Speaker: Thomas Clifford
Venue: Main Building, Cardiff University

The Northwest Regional Group is hosting a joint meeting with the Institute of Quarrying on 'Assessment and Design Mitigation for Rockfalls in Quarries'.

This presentation reflects upon the knowledge gained from the empirical testing, associated computer simulation and its application for quarry, highway & railway design through case studies. The presentation concludes with considering a new assessment and design approach to managing rockfalls.

[Visit the website for more information](#)

Email: [Nik Reynolds](#)

[Back to top](#)

Solent Regional Group: Careers Evening

Date: 27 November 2013

Venue: Richmond Building, University of Portsmouth

The Solent Regional Group in association with the Young Geoscientists' Group are holding a Young Geoscientists' Careers Evening.

This is an opportunity for young people to find out about studying and working in the geosciences industries and for professionals to provide information on their experiences through running a stand or delivering a presentation.



[Visit the website for more information](#)

Email: [Karen Allso](mailto:karen.allso@port.ac.uk)

Other

Job Opportunity: Chief Geologist for the Secretariat of the Pacific Community



The Secretariat of the Pacific Community (SPC) is recruiting for a Chief Geologist.

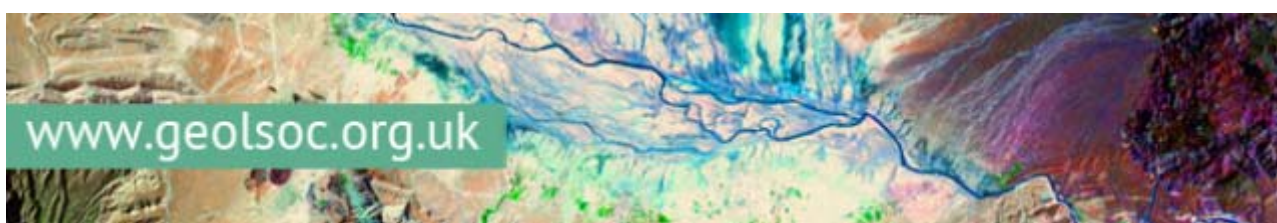
The Chief Geoscientist is a newly created role in the SOPAC leadership team and is accountable to the Director, Applied Geoscience and Technology Division (AGTD).

The position is responsible for the development, leadership and management of a new, predominantly land-based Geoscience for Development Unit, focused on addressing pressing Pacific development needs such as persistent poverty, unemployment, urbanisation, and lack of infrastructure and capacity.

[Visit the website for more information](#)

Email: [Prof Mike Petterson](mailto:mike.petterson@spc.int)

[Back to top](#)



The Geological Society of London • Burlington House • Piccadilly, London W1J 0BG

<http://www.geolsoc.org.uk>

[Subscribe](#) | [Unsubscribe](#) | [Send to a Friend](#) | [Preferences](#) | [Report Spam](#)