

[View as Web Page](#)

[Unsubscribe](#)

[Send to a Friend](#)



Welcome to the fortnightly Geological Society newsletter.

In this issue you'll find:

[Details on online access to additional e-journals & e-books](#)

[A call for nominations for Society awards](#)

[Details of a special membership offer](#)

[New online papers from the library](#)

[Upcoming events](#)

[Specialist and Regional group events](#)

Earth & Environmental Science E-journals & E-books



Online access to additional e-journals published by Elsevier and e-journals & e-books published by Springer has been arranged for Fellows of the Geological Society using Athens logins.

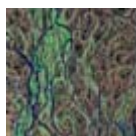


Access to the extra e-journals from Elsevier will be available during September and October, and the Springer publications will be available until the end of the year.

We will be using data from these trials to enhance the development of our collections. Visit our Virtual Library for details of publications available and how to get an Athens login.

[Visit the website for more information](#)

Email: [Library](#)



Membership

Call for Nominations

Fellows of the Society are invited to submit nominations for the Society's 2014 awards to the Awards Committee. Nominations should ideally be endorsed by several supporters to demonstrate wide support in the community.

Specialist and Regional Group Committees can also make nominations. These need only be signed by the Chair of the Group, who should make it clear that they are representing the whole Committee.

Nominations must be received no later than Friday, 4 October 2013.

[Visit our website for more information](#)

Email: [Stephanie Jones](#)



Special Membership Offer



The Geological Society has a special offer on membership. **Sign up as a Fellow for 2014 and get the rest of 2013 free!**

As a Fellow you will join an international community of geoscientists, with over 10,000 Fellows worldwide in over 80 countries. Fellows cover the spectrum of geoscience professions, from industry and consultancy to education and the public sector.

Find out about the [benefits of becoming a Fellow](#) of the Geological Society.

[Visit our website for more information](#)

Email: [Membership](#)

[Back to top](#)



Library & Information Services

Online Papers - 3D Structures of Meteorites

The papers in *Geochimica et Cosmochimica Acta* vol.116 cover a wide range of topics, marking the current frontier of tomographic applications in meteoritics, and outlining new insights that may be expected next.

Tomography is at a turning point, moving from a primarily qualitative technique to a more and more quantitative technique

Athens passwords needed for offsite access.



[Visit the website for more information](#)

Email: [Library](#)

Online Papers - Stratigraphic guide to the Rogaland Group, Norwegian North Sea

Newsletters on Stratigraphy vol.46 no.2 provides a major revision and update of the lithostratigraphy of the Rogaland Group for the Norwegian North Sea.

An abundance of recent well and seismic data sheds new light on lithology, biostratigraphy, provenance, geographic distribution and terminology of all Rogaland rock units, used widely in the search for oil and gas.

Athens passwords needed for offsite access.

[Visit the website for more information](#)

Email: [Library](#)



[Back to top](#)



Events

The Crossrail Major Infrastructure Project - High-end Risk Management at Work

Date: 24 September 2013

Venue: Institute of Civil Engineers, One Great George Street



The Hazards Forum is hosting an evening event on the risks and opportunities represented by the Crossrail major project. Crossrail represents Europe's largest infrastructure project delivering £14.9bn of new and improved infrastructure.

The talks will focus on how Crossrail is integral to the future transport vision for London, the progress and challenges of building the central section and the risks and challenges of upgrading the existing railway.

[Visit the website for more information](#)

Email: [Hazards Forum](#)

Geological Society Special Lecture: Of Ice and Land, Sea and Strand: Sea Levels During Glacial Cycles

Date: 25 September 2013
Venue: The Geological Society, London

One of the classic problems joining many of the geoscience disciplines is the relationship between ice sheets, sea level and the solid Earth during glacial cycles.

This talk will give an overview of the insights into the working of the planet's climate system, and a framework for discussing human migrations and coastal archaeological settings.



Kurt Lambeck, recipient of the Geological Society's Wollaston Medal for 2013, will look at what we have learnt about past ice sheets from geophysical inversions of geological data, and about the mantle's response to surface loading on time scales of thousands of years.

[Visit the website for more information](#)

Email: [Naomi Newbold](mailto:Naomi.Newbold@geological-society.org)

Founders Day Lecture and Dinner 2013



Date: 13 November 2013
Venue: The Geological Society and le Meridien Hotel, Piccadilly

To celebrate the Society's inauguration in 1807, we will be holding our annual Founders' Day Lecture and Dinner.

At the age of 16, James Parkinson (1755-1824) was apprenticed to his father to learn the 'art and mystery' of being an apothecary. His pioneering work in medicine led to discover the Shaking Palsy later known as Parkinson's disease.

This talk will review Parkinson's remarkable life, from a plot to kill King George III to how he put the study of fossils on the scientific map of Britain, and how his expertise as the country's only 'fossilist' led to him becoming one of the 13 founders of the Geological Society.

[Visit the website for more information](#)

Email: [Naomi Newbold](mailto:Naomi.Newbold@geological-society.org)

Careers in Earth Science 2013

Date: 20 November 2013
Venue: Our Dynamic Earth, Edinburgh

This Careers event is being run by the Earth Science Scotland community, and is co-badged by the Geological Society and the Petroleum Exploration Society of Great Britain.

The day will include presentations from early career earth scientists from the oil and gas, mining, geotechnical, environmental and research sectors, an exhibition by employers and a Higher education fair promoting MSc and PhD programmes.



[Visit the website for more information](#)

Email: [Registrations](mailto:Registrations@earth-scotland.org)

Dwarfism in Animals on Islands



Shell London Lectures 2013

Date: 11 September 2013
Venue: The Geological Society, London

The next Shell London lecture, 'Dwarfism in Animals on Islands' will be delivered by Victoria Herridge (Natural History Museum) on 11 September.

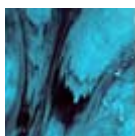
The lecture will be given twice on the same day, once at 3pm and then at 6pm. Entry to the lectures is free to all, but by ticket only.

Please note the 6pm lecture is now full. If you would like to book a place for the 3pm lecture or be added to the waiting list for 6pm please contact Naomi Newbold.

[Visit the website for more information](#)

Email: [Naomi Newbold](mailto:Naomi.Newbold@geological-society.org)

[Back to top](#)



Groups & Networks

West Midlands Regional Group: Evening Walk

Date: 10 September 2013
Venue: Lickey Hills, Worcestershire

The West Midlands Regional Group of the Geological Society is hosting an evening guided walk around the Lickey Hills 'Champions Trail' followed by a Fish and Chips supper.

The walk will last approximately 1.5 hours and will be at a leisurely pace, starting from the Lickey Hills Visitor Centre (Warren Lane, B45 8ER) at 18:30 prompt.

[Visit the website for more information](#)

Email: [Daniel Welch](mailto:Daniel.Welch@geological-society.org)



Southern Wales Regional Group: Taffs Well Thermal Spring Guided tour and Illustrated talk



Date 15 September 2013
Venue: Taff Wells Park, Cardiff

Taffs Well is home to the only thermal spring in Wales. On 15 September, as part of the European Heritage Open Doors Day - where buildings not normally open to the public are made available to view, the Southern Wales Regional Group will be hosting an event at the well.

Gareth Farr of the British Geological Society will give an illustrated talk and there will be a rare chance to go inside the well building - normally locked to the public.

[Visit the website for more information](#)
Email: [South West Regional Group](#)

Thames Valley Regional Group: The Geotechnical Academy

Date: 17 September 2013
Venue: Furgo House, Wallingford

The Thames Valley Regional Group, in collaboration with Geotechnical Engineering Ltd and Equipe Group, is hosting the Geotechnical Academy on 17 September.

The Academy will provide fundamental technical and commercial training to aspiring geo-professionals.



[Visit the website for more information](#)
Email: [Rachel Kieft](#)

Engineering & Hydrogeological Groups: Sustainable Engineering for the Olympic Park

Date: 17 September 2013
Venue: The Geological Society, London



The Engineering and Hydrogeological Groups of the Geological Society along with CIEEM invite you to a free conference exploring the challenges and achievements of geologists and ecologists at the Queen Elizabeth Olympic Park, home to the London 2012 Olympic Games.

[Visit the website for more information](#)
Email: [Paul Maliphant](#)

West Midlands Regional Group: Photographic Competition 2013 - Awards

The West Midlands Regional Group would like to thank all members for their entries to this year's Photographic Competition.

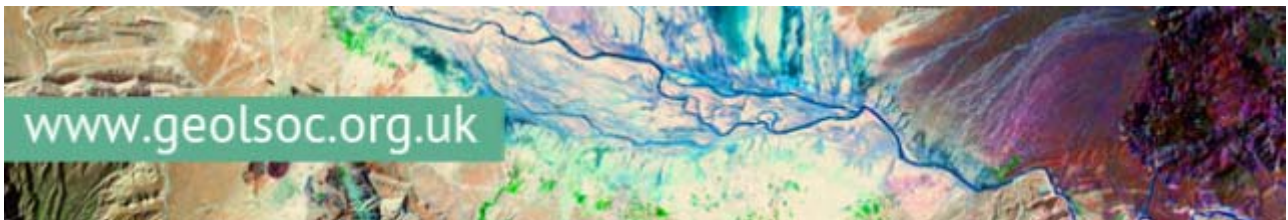
We have chosen a total of six winning images and one highly commended image, from the Geology in Motion and Creative/Abstract Geology categories, to feature at the 2013 Rock and Fossil Festival at Dudley Museum & Art Gallery in September 2013

[Visit the website for more information](#)

Email: [Daniel Welch](mailto:Daniel.Welch@geolsoc.org.uk)



[Back to top](#)



The Geological Society of London • Burlington House • Piccadilly, London W1J 0BG

<http://www.geolsoc.org.uk>

[Subscribe](#) | [Unsubscribe](#) | [Send to a Friend](#) | [Preferences](#) | [Report Spam](#)