



### ▶ The Society

- ▶ William Smith Meeting 2013
- ▶ Elections 2013
- ▶ Award Winners 2013

### ▶ Library & Info Services

- ▶ New online access: Island arc
- ▶ Online papers: Hydrogeology of cold regions
- ▶ Online papers: Bio- and chemo-mechanical processes in geotechnical engineering

### ▶ Events

- ▶ Hong Kong Regional Group: Steep landslide-prone hillsides in Hong Kong 200-500 years or more ago
- ▶ Central Scotland Regional Group: Glasgow's mining legacy
- ▶ Geohazards, climate change and landscape development in arid environments
- ▶ Western Regional Group: Early Career Geoscientist Award
- ▶ Central Scotland Regional Group: Earthquake induced landslides from the Canterbury earthquakes
- ▶ Exploration, resource and mining geology conference
- ▶ Shell London Lectures 2013

### ▶ Education/Careers

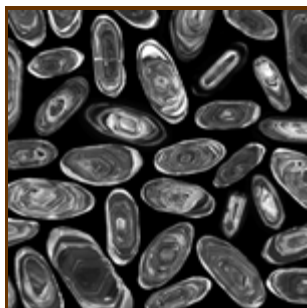
- ▶ Geoscience Education Academy 2013

### ▶ Groups and Networks

- ▶ GRSG Student Awards

### ▼ The Society

#### William Smith Meeting 2013



Date: 25 - 27 June 2013  
Venue: The Geological Society, London

In 1913, Frederick Soddy's research on the fundamentals of radioactivity led to the discovery of isotopes – one of the most important scientific developments of the 20th century. In that same year, Arthur Holmes published his famous booklet, 'The Age of the Earth', describing his vision of developing a

geological time scale.

Together, these landmarks established the field of science known today as isotope geochronology. Their centenary in 2013 provides us with an ideal opportunity for celebration.

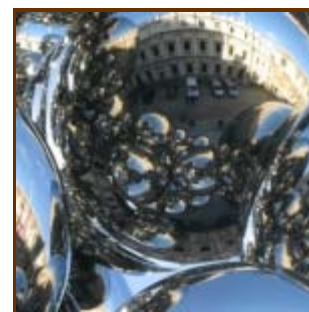
A call for abstracts is now open and both oral and poster contributions are invited. Abstracts of up to 500 words should be sent to [naomi.newbold@geolsoc.org.uk](mailto:naomi.newbold@geolsoc.org.uk) by 10 April 2013. For further details please visit [www.geolsoc.org.uk/wsmith13](http://www.geolsoc.org.uk/wsmith13).

[Visit the website for more information](#)  
[Email: Naomi Newbold](mailto:Naomi.Newbold@geolsoc.org.uk)

---

#### Elections 2013

Voting for the 2013 elections is now open and Fellows are encouraged to vote online for President designate and Council. The total number of Fellows voting in 2012 was 972 from an electorate of around 10,000. The candidates running for Council have committed to give a considerable amount of their time to serve the Society if elected – so please, give a very little of your time to vote.




Vote online at [www.geolsoc.org.uk/vote2013](http://www.geolsoc.org.uk/vote2013).

[Visit the website for more information](#)

---

#### Award Winners 2013

 We are delighted to announce the names of the winners of our medals and funds for 2013 and offer all our heartiest congratulations. The Awards will be presented at President's Day on 5 June 2013.

View the list of winners online at [www.geolsoc.org.uk/awards](http://www.geolsoc.org.uk/awards).

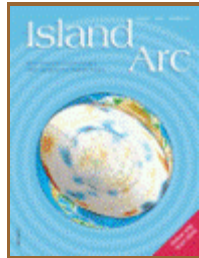
[Visit the website for more information](#)

[Email: Awards Secretary](#)

[Back to Top](#)

## Library & Info Services

New online access: Island arc



GSL Fellows now have offsite online access to Island Arc via the Library's Athens login facility. This journal focuses on the structure, dynamics and evolution of plate convergence zones and topics which are fundamental to understanding them.

Visit the [Virtual Library](#) for details of how to apply for an Athens login and a list of all the Library's e-journals.

[Visit the website for more information](#)

[Email: Serials](#)

---

Online papers: Hydrogeology of cold regions

*Hydrogeology Journal* vol.21 no.1 discusses subsurface hydrology with emphasis on ground ice and permafrost interactions with groundwater. It also covers externalities that impact the subsurface such as surface energy budget, snow hydrology or glaciers, and groundwater below ice sheets, and some papers address subsurface controls on the surface conditions via interaction with surface water or ecology. Athens passwords needed for offsite access.

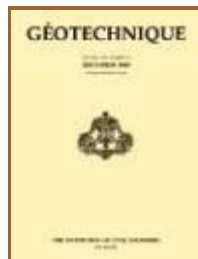


[Visit the website for more information](#)

[Email: Serials](#)

---

Online papers: Bio- and chemo-mechanical processes in geotechnical engineering



The 17th edition of *Geotechnique's* symposium in print series is published in two parts in *Geotechnique* vol.63 no.3 and no.4. The papers extend the area of multi-physical analysis to consider the evolution of the mechanical behaviour of soils and rocks exposed to biological and chemical processes. Athens passwords needed for offsite access.

[Visit the website for more information](#)

[Email: Serials](#)

[Back to Top](#)

## Events

Hong Kong Regional Group: Steep landslide-prone hillsides in Hong Kong 200-500 years or more ago

Date: 8 March 2013



Venue: 3/F, The Mariner's Club, Tsim Sha Tsui

This lecture follows the HKRG AGM and will present some observations about cycles of occupation on steep landslide-prone hillsides in Hong Kong dating from the more recent past to "before the British" and "before the Chinese". Free to attend. The lecture starts at 7pm.

[Visit the website for more information](#)

[Email: Chris Jack](#)

---

### Central Scotland Regional Group: Glasgow's mining legacy

Date: 12 March 2013

Venue: University of Strathclyde

The presence of extractable industrial minerals under the City of Glasgow has left a legacy which has had a significant impact on development right up to the present day. Donald Linn will discuss the development of mining in Glasgow, along with various methods used to locate and remediate workings and mine entries. Free to attend. The lecture starts at 6pm.



[Visit the website for more information](#)

[Email: Lesley McLellan](#)

---

### Geohazards, climate change and landscape development in arid environments



Date: 19 March 2013

Venue: Atkins, Epsom

Jointly organised by the South East Regional Group and the Thames Valley Regional Group, this lecture will investigate geohazards and climate change processes and how they can impact on engineering projects in desert landscapes. Free to attend. The talk starts at 6:30pm.

[Visit the website for more information](#)

[Email: SERG](#)

---

### Western Regional Group: Early Career Geoscientist Award

Date: 19 March 2013

Venue: University of Bristol



Finalists will give a ten minute presentation about a piece of work they have performed or participated in since graduation, followed by questions from the judging panel and audience. The winner, who will progress to the national final to be held at Burlington House, will be announced on the night. Free to attend. The event starts at 6:30pm.

[Visit the website for more information](#)

[Email: Toby Hopkins](#)

---

### Central Scotland Regional Group: Earthquake induced

## landslides from the Canterbury earthquakes



Date: 26 March 2013  
Venue: BGS, Edinburgh

Bill Murphy (University of Leeds) will discuss the earthquake induced landslides from the Canterbury earthquakes in 2010-2011. Of these earthquakes the magnitude 6.3 Christchurch earthquake on the 22 February 2011 was the most damaging, causing extensive liquefaction, rockfalls and rockslides and large vertical and horizontal ground accelerations. Free to attend. The lecture starts at 6pm.

[Visit the website for more information](#)

[Email: Lesley McLellan](#)

---

## Exploration, resource and mining geology conference

Date: 21-22 October 2013  
Venue: National Museum Cardiff, Wales



The Australasian Institute of Mining and Metallurgy (The AusIMM) and the Geological Society are pleased to announce the Exploration, Resource and Mining Geology 2013 Conference and are calling for abstracts from intending authors for consideration in the programme. The deadline for abstracts is 22 April.

[Visit the website for more information](#)

[Email: Georgina Worrall](#)

---

## Shell London Lectures 2013



The next Shell London lecture, '[Exceptionally preserved fossils: windows on the evolution of life](#)', will be delivered by David Siveter (University of Leicester) on 27 March.

The lecture will be given twice on the same day, once at 3pm and 6pm. Entry to the lectures is free to all, but by ticket only. To obtain a ticket please contact [Naomi Newbold](#) and state which lecture you would prefer to attend.

[Visit the website for more information](#)

[Email: Naomi Newbold](#)

[Back to Top](#)



## Education / Careers

### Geoscience Education Academy 2013



Thanks to BP's continued support, we will once again be holding the Geoscience Education Academy (GEA) from 25-28 July at Burlington House, London. This course offers UK teachers a great opportunity to understand how to teach geoscience if it is not their principal subject, but must do so as part of the curriculum, including a chance for existing Earth science teachers who may need a refresher and some new material. This year's guest speaker is Professor Iain Stewart. Free to attend with all travel reimbursed and accommodation included.

---

[Visit the website for more information](#)  
[Email: Joanna Mears](mailto:Joanna.Mears@geolsoc.org.uk)

[Back to Top](#)

## Specialist / Regional Groups

### GRSG Student Awards



Every year the Geological Remote Sensing Group (GRSG) offers up to three awards of £750 each. The aim is to reward and aid students that are engaged in geoscientific remote sensing research. These awards may be used to support laboratory work, fieldwork, data/software purchases, attendance at conferences, and international collaborations. The deadline for applications is 31 March.

[Visit the website for more information](#)  
[Email: Student Awards Committee](mailto:StudentAwards@geolsoc.org.uk)

[Back to Top](#)

---

Please do not send replies to this address. The Geological Society will not share your email address or any other personal data with third parties. Comments or suggestions? Please contact us. Visit the ultimate geological site at [www.geolsoc.org.uk](http://www.geolsoc.org.uk). To notify us of a change in email address contact [info@geolsoc.org.uk](mailto:info@geolsoc.org.uk). Follow us on [Facebook](#) and [Twitter](#).



[Subscribe](#) [Unsubscribe](#) [Send to a Friend](#) [Preferences](#) [Report Spam](#)

© The Geological Society of London