



▶ The Society

- ▶ Elections 2013 - Vote Online

▶ Library & Info Services

- ▶ Sale of duplicate stock

▶ Events

- ▶ Wellington Arch exhibition
- ▶ East Midlands Regional Group: Radioactive waste repositories in Finland and Sweden
- ▶ Hydrogeological Group: Groundwater dependent ecosystems
- ▶ North West Regional Group: Forensic geology
- ▶ South West Regional Group: GeoCareers fair
- ▶ Lyell Meeting 2013
- ▶ South West Regional Group: Schools Challenge final
- ▶ Southern Wales Regional Group: Estimating and reporting mineral resources
- ▶ Southern Wales Regional Group: Schools Geology Challenge
- ▶ South West Regional Group: Recovery from the greatest mass extinction of all time
- ▶ BES Global change and biosphere interactions conference
- ▶ Shell London Lectures 2013

▶ Specialist / Regional Groups

- ▶ Marine Studies Group Student awards
- ▶ West Midlands Regional Group photo competition

▶ Other News

- ▶ Applications for the L'Oréal UK & Ireland Fellowships for women in science
- ▶ Climate Change: Biological & Human Aspects

▼ The Society

Elections 2013 - Vote Online



Voting for the 2013 elections is now open. This is your chance to choose who should serve on Council to best represent the interests of Fellows and to shape the future of the Society.

There are eight vacancies on Council including President-designate. Two nominations have been received for the post of President-designate and ten for the remaining seven places. The results of this preliminary ballot will determine the list for the formal vote at the Annual General Meeting to be held on 5 June 2013.

Fellows are encouraged to vote online at www.geolsoc.org.uk/vote2013. The voting pages are only accessible to Fellows and you need to login to cast your vote. Please follow the instructions on the page.

For those Fellows unable to vote online, a postal ballot paper will be enclosed with the March issue of *Geoscientist*. Your vote must reach the Society by 31 March 2013.

NOTE: Fellows may only vote once, either by registering their vote online or by returning the postal ballot.

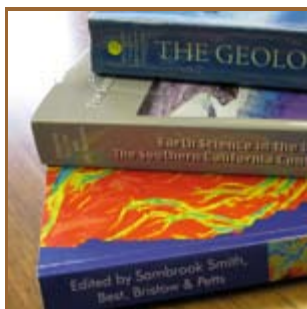
Edmund Nickless
Executive Secretary

[Visit the website for more information](#)

[Back to Top](#)

▼ Library & Info Services

Sale of duplicate stock



The Library's sale of duplicate and out-of-scope stock has now been updated. There are over 200 items for sale, including volumes from the Geological Society's Special Publication Series, as well as the usual range of books, journal special issues, maps and other items, many reduced in price since the previous sale.

Visit the [sale page](#) and email your order now to pick up a bargain!

[Visit the website for more information](#)

[Back to Top](#)

Events

Wellington Arch exhibition



Date: 6 Feb - 21 April
Venue: Wellington Arch, London

A lithograph of John Prestwich from the Geological Society Library collection is currently on loan to English Heritage for its new exhibition at the Quadriga Gallery: 'The General, The Scientist & The Banker: The Birth of Archaeology and the Battle for the Past'.

[Visit the website for more information](#)

[Email: English Heritage](mailto:EnglishHeritage)

East Midlands Regional Group: Radioactive waste repositories in Finland and Sweden

Date: 26 February 2013
Venue: BGS, Keyworth

Adrian Bath (Intellisci) will discuss the geological characteristics of the proposed sites for nuclear fuel disposals in Finland and Sweden that face each other across the Gulf of Bothnia. The lecture will follow the presentation of the Early Career Geoscientist Award. Free to attend. The event starts at 7pm.



[Visit the website for more information](#)

[Email: Helen Burke](mailto:Helen.Burke)

Hydrogeological Group: Groundwater dependent ecosystems



Date: 27 February 2013
Venue: The Birmingham & Midland Institute

This meeting will present current scientific research and address issues around characterisation, conceptualisation, monitoring, modelling, and management within the context of environmental change. The deadline for registration is 20 February.

[Visit the website for more information](#)

[Email: Chris Jackson](mailto:Chris.Jackson)

North West Regional Group: Forensic geology

Date: 28 February 2013
Venue: Manchester University

Dr Laurance Donnelly will provide an overview of the history and evolution of forensic geology



and how geologists have supported the police with certain types of crimes including murders, robbery and the search for graves. Free to attend. The lecture starts at 6:30pm.



[Visit the website for more information](#)

[Email: Nik Reynolds](#)

South West Regional Group: GeoCareers fair



Date: 6 March 2013

Venue: Plymouth University

The South West Regional Group look forward to welcoming you to the GeoCareers event this year. Attendees can find out more about a particular job area and talk to employers about potential opportunities for work experience or job opportunities.

[Visit the website for more information](#)

[Email: Jonathan King](#)

Lyell Meeting 2013

Date: 13 March 2013

Venue: The Geological Society, London

Relevant to all who are interested in complex feedback processes within Earth systems, the 2013 Lyell Meeting will examine the varied feedback processes operating in ecosystems during and after the Cambrian Explosion and the changes that occurred. Registration is now open.



[Visit the website for more information](#)

[Email: Naomi Newbold](#)

South West Regional Group: Schools Challenge final



Date: 13 March 2013

Venue: Plymouth University

Following the success of last year's event, the South West Regional Group will once again be hosting the Schools Challenge. Schools in Cornwall, Devon, Dorset and Somerset who wish to express an interest in participating should contact [Gordon Neighbour](#) before 6 March.

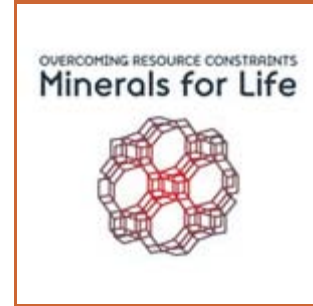
[Visit the website for more information](#)

[Email: Gordon Neighbour](#)

Southern Wales Regional Group: Estimating and reporting mineral resources

Date: 13 March 2013
Venue: Cardiff University

Dr Lucy Roberts (SRK) will provide a brief overview of the aspects which the competent person needs to bear in mind during the estimation and reporting of mineral resources in the public domain, and some of the pitfalls encountered. Free to attend. The lecture starts at 6pm.



[Visit the website for more information](#)
[Email: SWRG](#)

Southern Wales Regional Group: Schools Geology Challenge



Date: 19 March 2013
Venue: Gower College Swansea

Four schools from Southern Wales will compete over three rounds to walk away with the 2013 Schools Geology Challenge Trophy. The event is free to attend and all are welcome to attend. The event starts at 5:30pm.

[Visit the website for more information](#)
[Email: SWRG](#)

South West Regional Group: Recovery from the greatest mass extinction of all time

Date: 20 March 2013
Venue: Burrell Theatre, Truro

Professor Mike Benton (University of Bristol) will talk about one of his current research projects focussing on the end-Permian mass extinction, the greatest mass extinction of all time, and its effects on terrestrial organisms. Free to attend. The talk starts at 7pm.



[Visit the website for more information](#)
[Email: Jonathan King](#)

BES Global change and biosphere interactions conference

Date: 8-9 April 2013
Venue: University of York

The British Ecological Society (BES) and York Environmental Sustainability Institute (YESI) are hosting a major international conference on sustainable solutions to global environmental change. There will be extensive opportunities for discussing the role of interdisciplinary research



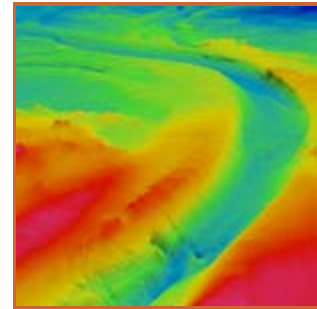
in understanding the impacts of global change and identifying new research which will allow us to mitigate and adapt to these impacts. Early bird registration closes 8 March.

[Visit the website for more information](#)

[Email: Amy Everard](#)

Shell London Lectures 2013

The next Shell London lecture, '[Landslides and subsidence: expecting the unexpected - engineering geology in an age of austerity](#)', will be delivered by David Shilston (GSL President & Atkins UK) on 27 February.



Tickets are available for the talk at 3pm. To obtain a ticket please contact Naomi Newbold.

[Visit the website for more information](#)

[Email: Naomi Newbold](#)

[Back to Top](#)

Specialist / Regional Groups

Marine Studies Group Student awards



To promote the teaching of Marine Earth and Environmental Sciences, the Marine Studies Group Student Awards will be made annually to the top student, based on the recommendation of the course tutor, for pre-registered courses in the Marine Earth and Environmental Sciences. Nominations for the best student can be made at any time of the year.

[Visit the website for more information](#)

[Email: Alan G. Stevenson](#)

West Midlands Regional Group photo competition

Fellows are invited to enter the WMRG photo competition, aimed primarily at amateur photographers. You can enter up to a total of three photographs, which must be your own work, choosing between the following four categories: geology in motion; geology at work; geology and the midlands; creative/abstract



geology. The closing date for entries is 29 March.



[Visit the website for more information](#)

[Email: WMRG](#)

[Back to Top](#)

Other News

Applications for the L'Oréal UK & Ireland Fellowships for women in science

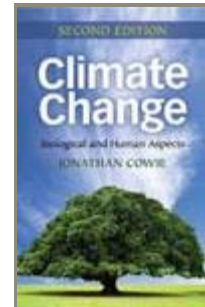


L'Oréal UK & Ireland, the UK National Commission for UNESCO and the Irish National Commission for UNESCO, with the support of the Royal Society have partnered together to provide a dedicated UK & Ireland For Women In Science Fellowship Programme for women scientists at postdoctoral level to enable and/or facilitate promising scientific research in the life or physical sciences. Four Fellowships will be awarded in 2013 to outstanding female postdoctoral scientists to assist them with their research. The closing date for applications is 15 March.

[Visit the website for more information](#)

Climate Change: Biological & Human Aspects

'Climate Change: Biological & Human Aspects' by Jonathan Cowie FGS, published recently is currently being offered at a 20% discount to all Fellows and their undergraduate students. This cross-disciplinary book includes palaeoclimate change and a fair proportion has an Earth Systems Science approach. The first edition was UNEP recommended as part of the UN World Environment Day in 2008 among other favourable reviews. To claim your discounted copy, please order direct [from CUP](#) before the end of March 2013.



[Visit the website for more information](#)

[Back to Top](#)

Please do not send replies to this address. The Geological Society will not share your email address or any other personal data with third parties. Comments or suggestions? Please contact us. Visit the ultimate geological site at www.geolsoc.org.uk. To notify us of a change in email address contact info@geolsoc.org.uk. Follow us on [Facebook](#) and [Twitter](#).

